

## (Ala13)-Apelin-13 acetate

## Chemical Properties

CAS No. :

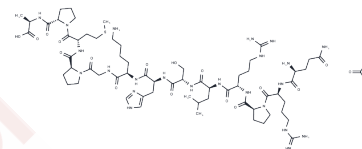
Formula: C65H111N23O18S

Molecular Weight: 1534.79

Keep away from moisture

Storage: Powder: -20°C for 3 years | In solvent: -80°C for 1 year

Actual storage temperature shall be subject to the COA.



## Biological Description

Description	(Ala13)-Apelin-13 acetate, an APJ antagonist, modulates CRF-induced enhanced colonic motility, visceral sensation, and gut barrier.
Targets(IC50)	Apelin receptor
In vivo	(Ala13)-Apelin-13 acetate (i.p.) blocked lipopolysaccharide (LPS)- or CRF-induced visceral hypersensitivity and colonic hyperpermeability (IBS model) in a dose-response manner[1].

## Preparing Stock Solutions

	1mg	5mg	10mg
1 mM	0.6516 mL	3.2578 mL	6.5155 mL
5 mM	0.1303 mL	0.6516 mL	1.3031 mL
10 mM	0.0652 mL	0.3258 mL	0.6516 mL
50 mM	0.013 mL	0.0652 mL	0.1303 mL

Please select the appropriate solvent to prepare the stock solution, according to the solubility of the product in different solvents. Please use it as soon as possible.

Note: The dilution table applies only to solid products. For liquid products, please calculate the stock solution based on the stated concentration and/or density.

## Reference

Nozu T, et al. Peripheral apelin mediates visceral hypersensitivity and impaired gut barrier in a rat irritable bowel syndrome model. *Neuropeptides*. 2022 Aug;94:102248.

**Inhibitor · Natural Compounds · Compound Libraries · Recombinant Proteins**

This product is for Research Use Only · Not for Human or Veterinary or Therapeutic Use

Tel:781-999-4286 E\_mail:info@targetmol.com Address:34 Washington Street,Wellesley Hills,MA 02481