

PD 145065

Chemical Properties

CAS No. : 153049-49-1

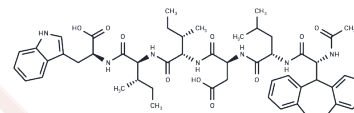
Formula: C52H67N7O10

Molecular Weight: 950.13

Keep away from moisture

Storage: Powder: -20°C for 3 years | In solvent: -80°C for 1 year

Actual storage temperature shall be subject to the COA.



Biological Description

Description	PD 145065 is a non-selective antagonist of endothelin(A)/endothelin(B).
Targets(IC50)	Endothelin Receptor

Preparing Stock Solutions

	1mg	5mg	10mg
1 mM	1.0525 mL	5.2624 mL	10.5249 mL
5 mM	0.2105 mL	1.0525 mL	2.105 mL
10 mM	0.1052 mL	0.5262 mL	1.0525 mL
50 mM	0.021 mL	0.1052 mL	0.2105 mL

Please select the appropriate solvent to prepare the stock solution, according to the solubility of the product in different solvents. Please use it as soon as possible.

Note: The dilution table applies only to solid products. For liquid products, please calculate the stock solution based on the stated concentration and/or density.

Reference

Wellings RP, Warner TD, Thiemermann C, Cristol JP, Corder R, Vane JR. Vasoconstriction in the rat kidney induced by endothelin-1 is blocked by PD 145065. *J Cardiovasc Pharmacol.* 1993;22 Suppl 8:S103-6. PubMed PMID: 7509915.

Dobrowolski L, Endlich K, Sadowski J, Steinhausen M. Cardiovascular and renal effects of endothelin receptor blockade with PD 145065 and interaction with urodilatin. *Acta Physiol Scand.* 1997 Jan;159(1):7-13. PubMed PMID: 9124073.

Norota I, Endoh M. Pharmacological characteristics of endothelin receptors in the rabbit ventricular myocardium: the nonselective endothelin receptor antagonist PD 145065 antagonizes the positive inotropic effect of endothelin-3 but not of endothelin-1. *Mol Cell Biochem.* 1996 Jul-Aug;160-161:67-74. PubMed PMID: 8901457.

Wellings RP, Corder R, Doherty AM, Vane JR. Antagonism of renal and systemic responses to endothelin-1 infusion with PD 145065. *Eur J Pharmacol.* 1994 Apr 21;256(2):201-4. PubMed PMID: 8050471.

Inhibitor · Natural Compounds · Compound Libraries · Recombinant Proteins

This product is for Research Use Only · Not for Human or Veterinary or Therapeutic Use

Tel:781-999-4286 E_mail:info@targetmol.com Address:34 Washington Street,Wellesley Hills,MA 02481