

Beefy meaty peptide

Chemical Properties

CAS No. : 73984-05-1

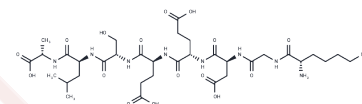
Formula: C₃₄H₅₇N₉O₁₆

Molecular Weight: 847.87

Keep away from moisture

Storage: Powder: -20°C for 3 years | In solvent: -80°C for 1 year

Actual storage temperature shall be subject to the COA.



Biological Description

Description

Beefy meaty peptide is a bioactive chemical.

Preparing Stock Solutions

	1mg	5mg	10mg
1 mM	1.1794 mL	5.8971 mL	11.7943 mL
5 mM	0.2359 mL	1.1794 mL	2.3589 mL
10 mM	0.1179 mL	0.5897 mL	1.1794 mL
50 mM	0.0236 mL	0.1179 mL	0.2359 mL

Please select the appropriate solvent to prepare the stock solution, according to the solubility of the product in different solvents. Please use it as soon as possible.

Note: The dilution table applies only to solid products. For liquid products, please calculate the stock solution based on the stated concentration and/or density.

Reference

Song S, Zhang X, Hayat K, Huang M, Liu P, Karangwa E, Gu F, Jia C, Xia S, Xiao Z, Niu Y. Contribution of beef base to aroma characteristics of beeflike process flavour assessed by descriptive sensory analysis and gas chromatography olfactometry and partial least squares regression. J Chromatogr A. 2010 Dec 3;1217(49):7788-99. doi: 10.1016/j.chroma.2010.10.046. Epub 2010 Oct 20. PubMed PMID: 21055762.

Inhibitor · Natural Compounds · Compound Libraries · Recombinant Proteins

This product is for Research Use Only · Not for Human or Veterinary or Therapeutic Use

Tel:781-999-4286

E_mail:info@targetmol.com

Address:34 Washington Street,Wellesley Hills,MA 02481