

LDS-751

Chemical Properties

CAS No. : 181885-68-7

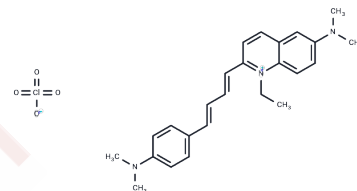
Formula: C₂₅H₃₀ClN₃O₄

Molecular Weight: 471.98

Keep away from direct sunlight

Storage: Powder: -20°C for 3 years

Actual storage temperature shall be subject to the COA.



Biological Description

Description	LDS-751 is a stain of nucleic acid.
Targets(IC50)	Others, Autophagy
In vitro	The LDS-751 permits the discrimination of intact cells from residual erythrocyte ghosts, platelets, and damaged nucleated cells. The forward and orthogonal light scattering signals of the intact cells, identified by LDS-751 staining allow a clear separation between the major leukocyte populations [1].

Preparing Stock Solutions

	1mg	5mg	10mg
1 mM	2.1187 mL	10.5937 mL	21.1873 mL
5 mM	0.4237 mL	2.1187 mL	4.2375 mL
10 mM	0.2119 mL	1.0594 mL	2.1187 mL
50 mM	0.0424 mL	0.2119 mL	0.4237 mL

Please select the appropriate solvent to prepare the stock solution, according to the solubility of the product in different solvents. Please use it as soon as possible.

Note: The dilution table applies only to solid products. For liquid products, please calculate the stock solution based on the stated concentration and/or density.

Reference

Terstappen LW, et al. A rapid sample preparation technique for flow cytometric analysis of immunofluorescence allowing absolute enumeration of cell subpopulations. J Immunol Methods. 1989 Sep 29;123(1):103-12.

McCarthy DA, et al. A simple flow cytometric procedure for the determination of surface antigens on unfixed leucocytes in whole blood. J Immunol Methods. 1993 Aug 9;163(2):155-60.

Inhibitor · Natural Compounds · Compound Libraries · Recombinant Proteins

This product is for Research Use Only · Not for Human or Veterinary or Therapeutic Use

Tel:781-999-4286 E_mail:info@targetmol.com Address:34 Washington Street,Wellesley Hills,MA 02481