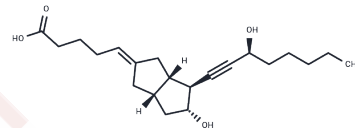


Fce 21258

## Chemical Properties

CAS No. : 71934-91-3  
 Formula: C<sub>21</sub>H<sub>32</sub>O<sub>4</sub>  
 Molecular Weight: 348.48  
 Storage: Powder: -20°C for 3 years | In solvent: -80°C for 1 year  
 Actual storage temperature shall be subject to the COA.



## Biological Description

Description	Fce 21258 is used to stimulate the adenylate cyclase of synovial fluid macrophages.
Targets(IC50)	Others

## Preparing Stock Solutions

	1mg	5mg	10mg
1 mM	2.8696 mL	14.348 mL	28.6961 mL
5 mM	0.5739 mL	2.8696 mL	5.7392 mL
10 mM	0.287 mL	1.4348 mL	2.8696 mL
50 mM	0.0574 mL	0.287 mL	0.5739 mL

Please select the appropriate solvent to prepare the stock solution, according to the solubility of the product in different solvents. Please use it as soon as possible.

Note: The dilution table applies only to solid products. For liquid products, please calculate the stock solution based on the stated concentration and/or density.

## Reference

- Elliott GR, Swaak A, Bonta IL. The adenylate cyclase of rheumatoid synovial fluid macrophages is more sensitive for dl-5E, 19,14-di dehydro-carbo-prostacyclin, a stable prostacyclin analogue, than for prostaglandin E2. Prostaglandins Leukot Essent Fatty Acids. 1988 Aug;33(2):105-10. PubMed PMID: 2845436.
- Adolfs MJ, Bonta IL. Plasticity of prostaglandin E2 receptor in human macrophages and the ternary complex of adenylate cyclase. Adv Prostaglandin Thromboxane Leukot Res. 1987;17A:459-62. PubMed PMID: 2889337.
- Adolfs MJ, Fieren MW, Bonta IL. Infectious-inflammatory changes in cyclic AMP levels and in their regulation by prostaglandins in human peritoneal macrophages. Prostaglandins Leukot Med. 1985 May;18(2):217-26. PubMed PMID: 2989936.
- Morley J, Page CP, Paul W, Mongelli N, Ceserani R, Gandolfi C. A comparative study of PGI<sub>2</sub> and two analogues (FCE 21292 and FCE 21258) in vitro and in vivo. Prostaglandins Leukot Med. 1983 Aug;11(4):391-9. PubMed PMID: 6353424.

**Inhibitor · Natural Compounds · Compound Libraries · Recombinant Proteins**

This product is for Research Use Only · Not for Human or Veterinary or Therapeutic Use

Tel:781-999-4286 E\_mail:info@targetmol.com Address:34 Washington Street,Wellesley Hills,MA 02481