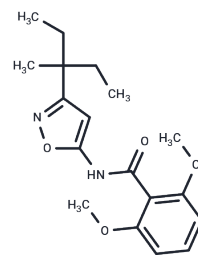


Isoxaben

Chemical Properties

CAS No. :	82558-50-7
Formula:	C ₁₈ H ₂₄ N ₂ O ₄
Molecular Weight:	332.39
Storage:	Powder: -20°C for 3 years In solvent: -80°C for 1 year Actual storage temperature shall be subject to the COA.



Biological Description

Description	Isoxaben (EL 107) is a specific inhibitor of cell wall biosynthesis, often used as a herbicide, that inhibits the incorporation of radiolabeled glucose into acid-insoluble cell wall fractions.
Targets(IC50)	Others,Cell wall

Preparing Stock Solutions

	1mg	5mg	10mg
1 mM	3.0085 mL	15.0426 mL	30.0851 mL
5 mM	0.6017 mL	3.0085 mL	6.017 mL
10 mM	0.3009 mL	1.5043 mL	3.0085 mL
50 mM	0.0602 mL	0.3009 mL	0.6017 mL

Please select the appropriate solvent to prepare the stock solution, according to the solubility of the product in different solvents. Please use it as soon as possible.

Note: The dilution table applies only to solid products. For liquid products, please calculate the stock solution based on the stated concentration and/or density.

Reference

- Heim DR, et al. Isoxaben Inhibits the Synthesis of Acid Insoluble Cell Wall Materials In Arabidopsis thaliana. *Plant Physiol.* 1990;93(2):695-700.
- Rouchaud J, et al. Isoxaben soil biodegradation in pear tree orchard after repeated high dose application. *Arch Environ Contam Toxicol.* 1997;33(3):247-251.
- Camper ND, et al. Degradation of isoxaben in soils and an aqueous system. *J Environ Sci Health B.* 2001;36(6):729-739.
- Brabham C, et al. Grass cell walls have a role in the inherent tolerance of grasses to the cellulose biosynthesis inhibitor isoxaben. *Pest Manag Sci.* 2018;74(4):878-884.
- Lazzaro MD, et al. Disruption of cellulose synthesis by isoxaben causes tip swelling and disorganizes cortical microtubules in elongating conifer pollen tubes. *Protoplasma.* 2003;220(3-4):201-207.
- Drakeford CE, et al. Fate of isoxaben in a containerized plant rhizosphere system. *Chemosphere.* 2003;50(9):1243-1247.

Inhibitor · Natural Compounds · Compound Libraries · Recombinant Proteins

This product is for Research Use Only· Not for Human or Veterinary or Therapeutic Use

Tel:781-999-4286 E_mail:info@targetmol.com Address:34 Washington Street,Wellesley Hills,MA 02481