

Emd 55450

Chemical Properties

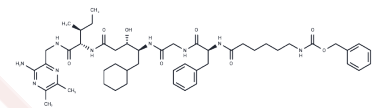
CAS No. : 126657-82-7

Formula: C₄₉H₇₁N₉O₈

Molecular Weight: 914.14

Storage: Powder: -20°C for 3 years | In solvent: -80°C for 1 year

Actual storage temperature shall be subject to the COA.



Biological Description

| | |
|---------------|---|
| Description | Emd 55450 is a synthetic renin antagonist. It is an analog of EMD 55068 with terminal amino group blocked by benzyloxycarbonyl group. |
| Targets(IC50) | Others |

Preparing Stock Solutions

| | 1mg | 5mg | 10mg |
|-------|-----------|-----------|------------|
| 1 mM | 1.0939 mL | 5.4696 mL | 10.9392 mL |
| 5 mM | 0.2188 mL | 1.0939 mL | 2.1878 mL |
| 10 mM | 0.1094 mL | 0.547 mL | 1.0939 mL |
| 50 mM | 0.0219 mL | 0.1094 mL | 0.2188 mL |

Please select the appropriate solvent to prepare the stock solution, according to the solubility of the product in different solvents. Please use it as soon as possible.

Note: The dilution table applies only to solid products. For liquid products, please calculate the stock solution based on the stated concentration and/or density.

Reference

Ziegler K, Sanger U. Binding proteins for linear renin-inhibiting peptides in basolateral plasma membranes of rat liver. *Biochim Biophys Acta*. 1992 Jan 31;1103(2):219-28. PubMed PMID: 1543706.

Inhibitor · Natural Compounds · Compound Libraries · Recombinant Proteins

This product is for Research Use Only · Not for Human or Veterinary or Therapeutic Use

Tel:781-999-4286

E_mail:info@targetmol.com

Address:34 Washington Street,Wellesley Hills,MA 02481