

Methyl palmitoleate

Chemical Properties

CAS No. : 1120-25-8

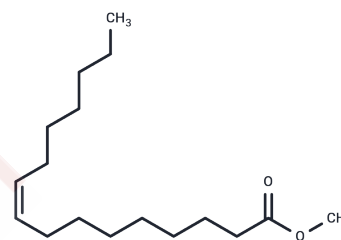
Formula: C17H32O2

Molecular Weight: 268.43

Store at low temperature

Storage: Pure form: -20°C for 3 years | In solvent: -80°C for 1 year

Actual storage temperature shall be subject to the COA.



Biological Description

Description	O-PHOSPHO-L-SERINE is an ester of serine and phosphate, which are normal metabolites in human biofluids. O-phospho-L-serine is a phagocytosis inhibitor that inhibits glial cell proliferation and cone cell regeneration after photodamage.
Targets(IC50)	Others

Solubility Information

Solubility	DMSO: 30 mg/mL (111.76 mM), Sonication is recommended. (< 1 mg/ml refers to the product slightly soluble or insoluble)
In vivo Formulation	10% DMSO+40% PEG300+5% Tween 80+45% Saline: 2 mg/mL (7.45 mM), Sonication is recommended. <i>Please add the solvents sequentially, clarifying the solution as much as possible before adding the next one. Dissolve by heating and/or sonication if necessary. Working solution is recommended to be prepared and used immediately. The formulation provided above is for reference purposes only. In vivo formulations may vary and should be modified based on specific experimental conditions.</i>

Preparing Stock Solutions

	1mg	5mg	10mg
1 mM	3.7254 mL	18.6268 mL	37.2537 mL
5 mM	0.7451 mL	3.7254 mL	7.4507 mL
10 mM	0.3725 mL	1.8627 mL	3.7254 mL
50 mM	0.0745 mL	0.3725 mL	0.7451 mL

Please select the appropriate solvent to prepare the stock solution, according to the solubility of the product in different solvents. Please use it as soon as possible.

Note: The dilution table applies only to solid products. For liquid products, please calculate the stock solution based on the stated concentration and/or density.

Reference

Nestel, P., et al. Effects of increasing dietary palmitoleic acid compared with palmitic and oleic acids on plasma lipids of hypercholesterolemic men. *J. Lipid Res.* 35(4), 656-662 (1994).

Inhibitor · Natural Compounds · Compound Libraries · Recombinant Proteins

This product is for Research Use Only · Not for Human or Veterinary or Therapeutic Use

Tel:781-999-4286 E_mail:info@targetmol.com Address:34 Washington Street,Wellesley Hills,MA 02481