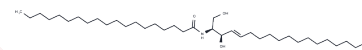


## C19 Ceramide (d18:1/19:0)

## Chemical Properties

CAS No. :	67492-17-5
Formula:	C37H73NO3
Molecular Weight:	579.98
Storage:	Powder: -20°C for 3 years   In solvent: -80°C for 1 year Actual storage temperature shall be subject to the COA.



## Biological Description

Description	C19 Ceramide is a naturally occurring ceramide that has been found in <i>J. juncea</i> extracts as well as rat brain and mouse heart.[1],[2],[3] It is elevated in adult and decreased in juvenile whole rat brain extracts by 114 and 37%, respectively, following chronic ethanol exposure.[2] C19 Ceramide is also increased in mouse hearts following administration of angiotensin II.[3]
Targets(IC50)	Others

## Solubility Information

Solubility	Chloroform: Soluble Methanol: Soluble, Heating is recommended. Ethanol: Soluble, Heating is recommended. (< 1 mg/ml refers to the product slightly soluble or insoluble)
------------	---

## Preparing Stock Solutions

	1mg	5mg	10mg
1 mM	1.7242 mL	8.621 mL	17.242 mL
5 mM	0.3448 mL	1.7242 mL	3.4484 mL
10 mM	0.1724 mL	0.8621 mL	1.7242 mL
50 mM	0.0345 mL	0.1724 mL	0.3448 mL

Please select the appropriate solvent to prepare the stock solution, according to the solubility of the product in different solvents. Please use it as soon as possible.

Note: The dilution table applies only to solid products. For liquid products, please calculate the stock solution based on the stated concentration and/or density.

### Reference

Krishna, N., Muralidhar, P., Kumar, M.M., et al. A new sphingolipid from the gorgonian *Junceella juncea* of the Indian ocean. *Nat. Prod. Res.* 18(6), 551-555 (2004).

Roux, A., Muller, L., Jackson, S.N., et al. Chronic ethanol consumption profoundly alters regional brain ceramide and sphingomyelin content in rodents. *ACS Chem Neurosci.* 6(2), 247-259 (2015).

Glenn, D.J., Cardema, M.C., Ni, W., et al. Cardiac steatosis potentiates angiotensin II effects in the heart. *Am. J. Physiol. Heart Circ. Physiol.* 308(4), H339-350 (2015).

**Inhibitor · Natural Compounds · Compound Libraries · Recombinant Proteins**

This product is for Research Use Only · Not for Human or Veterinary or Therapeutic Use

Tel:781-999-4286 E\_mail:info@targetmol.com Address:34 Washington Street,Wellesley Hills,MA 02481