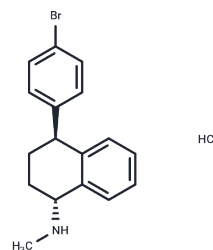


CP-53631

## Chemical Properties

CAS No. : 79836-56-9  
 Formula: C<sub>17</sub>H<sub>19</sub>BrClN  
 Molecular Weight: 352.7  
 Storage: Powder: -20°C for 3 years | In solvent: -80°C for 1 year  
 Actual storage temperature shall be subject to the COA.



## Biological Description

Description	CP-53631 is a selective serotonin reuptake inhibitor (SSRI)
Targets(IC50)	Others, Autophagy

## Preparing Stock Solutions

	1mg	5mg	10mg
1 mM	2.8353 mL	14.1764 mL	28.3527 mL
5 mM	0.5671 mL	2.8353 mL	5.6705 mL
10 mM	0.2835 mL	1.4176 mL	2.8353 mL
50 mM	0.0567 mL	0.2835 mL	0.5671 mL

Please select the appropriate solvent to prepare the stock solution, according to the solubility of the product in different solvents. Please use it as soon as possible.

Note: The dilution table applies only to solid products. For liquid products, please calculate the stock solution based on the stated concentration and/or density.

Inhibitor · Natural Compounds · Compound Libraries · Recombinant Proteins

This product is for Research Use Only · Not for Human or Veterinary or Therapeutic Use

Tel: 781-999-4286 E\_mail: info@targetmol.com Address: 34 Washington Street, Wellesley Hills, MA 02481