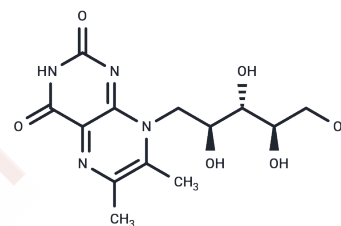


## 6,7-Dimethyl-8-ribityllumazine

## Chemical Properties

CAS No. :	2535-20-8
Formula:	C <sub>13</sub> H <sub>18</sub> N <sub>4</sub> O <sub>6</sub>
Molecular Weight:	326.31
Storage:	Keep away from direct sunlight, Store at low temperature Powder: -20°C for 3 years   In solvent: -80°C for 1 year <small>Actual storage temperature shall be subject to the COA.</small>



## Biological Description

Description	6,7-Dimethyl-8-ribityllumazine is a well-characterized biosynthetic precursor of riboflavin (RBF) that functions as a noncovalently bound fluorophore within lumazine protein (LumP), an accessory protein exhibiting intrinsic fluorescence, 6,7-Dimethyl-8-ribityllumazine is therefore extensively used in studies of flavin biosynthesis, protein-ligand interactions, fluorescence-based assays, and metabolic pathway reconstruction.
Targets(IC50)	Others
In vitro	LumP modulates the color of light generated by bacterial luciferase only when complexed with 6,7-Dimethyl-8-ribityllumazine (DMRL)[1].

## Preparing Stock Solutions

	1mg	5mg	10mg
1 mM	3.0646 mL	15.3229 mL	30.6457 mL
5 mM	0.6129 mL	3.0646 mL	6.1291 mL
10 mM	0.3065 mL	1.5323 mL	3.0646 mL
50 mM	0.0613 mL	0.3065 mL	0.6129 mL

Please select the appropriate solvent to prepare the stock solution, according to the solubility of the product in different solvents. Please use it as soon as possible.

Note: The dilution table applies only to solid products. For liquid products, please calculate the stock solution based on the stated concentration and/or density.

## Reference

Yuichi Sato, et al. Crystal structures of the lumazine protein from *Photobacterium kishitanii* in complexes with the authentic chromophore, 6,7-dimethyl- 8-(1'-D-ribityl) lumazine, and its analogues, riboflavin and flavin mononucleotide, at high resolution. *J Bacteriol.* 2010 Jan;192(1):127-33.

**Inhibitor · Natural Compounds · Compound Libraries · Recombinant Proteins**

This product is for Research Use Only · Not for Human or Veterinary or Therapeutic Use

Tel:781-999-4286 E\_mail:info@targetmol.com Address:34 Washington Street,Wellesley Hills,MA 02481