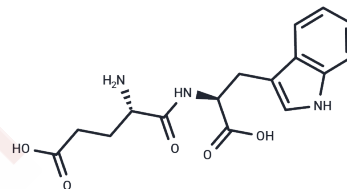


## Oglufanide

## Chemical Properties

CAS No. :	38101-59-6
Formula:	C <sub>16</sub> H <sub>19</sub> N <sub>3</sub> O <sub>5</sub>
Molecular Weight:	333.34
Storage:	Keep away from moisture Powder: -20°C for 3 years   In solvent: -80°C for 1 year <small>Actual storage temperature shall be subject to the COA.</small>



## Biological Description

Description	Oglufanide (H-Glu-Trp-OH) is a naturally occurring thymic immunomodulator that inhibits vascular endothelial growth factor (VEGF).
Targets(IC50)	HCV Protease,Endogenous Metabolite,VEGFR

## Solubility Information

Solubility	DMSO: 15.5 mg/mL (46.5 mM),Sonication is recommended. (< 1 mg/ml refers to the product slightly soluble or insoluble)
In vivo Formulation	10% DMSO+40% PEG300+5% Tween 80+45% Saline: 2 mg/mL (6 mM),Sonication is recommended. <i>Please add the solvents sequentially, clarifying the solution as much as possible before adding the next one. Dissolve by heating and/or sonication if necessary. Working solution is recommended to be prepared and used immediately. The formulation provided above is for reference purposes only. In vivo formulations may vary and should be modified based on specific experimental conditions.</i>

## Preparing Stock Solutions

	1mg	5mg	10mg
1 mM	2.9999 mL	14.9997 mL	29.9994 mL
5 mM	0.600 mL	2.9999 mL	5.9999 mL
10 mM	0.300 mL	1.500 mL	2.9999 mL
50 mM	0.060 mL	0.300 mL	0.600 mL

Please select the appropriate solvent to prepare the stock solution, according to the solubility of the product in different solvents. Please use it as soon as possible.

Note: The dilution table applies only to solid products. For liquid products, please calculate the stock solution based on the stated concentration and/or density.

Reference

Bayes M , Rabasseda X , Prous J R . Gateways to Clinical Trials[J]. Methods & Findings in Experimental & Clinical Pharmacology, 2008, 30(4):313.

**Inhibitor · Natural Compounds · Compound Libraries · Recombinant Proteins**

This product is for Research Use Only· Not for Human or Veterinary or Therapeutic Use

Tel:781-999-4286 E\_mail:info@targetmol.com Address:34 Washington Street,Wellesley Hills,MA 02481