

Crustacean Cardioactive Peptide (CCAP)

Chemical Properties

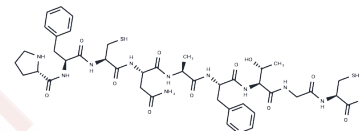
CAS No. : 309247-84-5

Formula: C42H58N10O12S2

Molecular Weight: 959.1

Storage: Keep away from moisture, Store at low temperature
Powder: -20°C for 3 years | In solvent: -80°C for 1 year

Actual storage temperature shall be subject to the COA.



Biological Description

Description	Crustacean Cardioactive Peptide (CCAP) is a highly conserved modified cyclic nonapeptide with a primary structure of PFCNAFTGC-NH ₂ , a disulfide bridge between Cys3 and Cys9, which acts as a cardiac gas pedal, neuropeptide transmitter, and hormone with cardiac, adipotropic hormone, and metabolic regulatory effects, reproductive system.
Targets(IC50)	Others,GRK

Solubility Information

Solubility	H ₂ O: < 0.1 mg/mL (insoluble), DMSO: 50 mg/mL (52.13 mM), Sonication is recommended. (< 1 mg/ml refers to the product slightly soluble or insoluble)
------------	--

Preparing Stock Solutions

	1mg	5mg	10mg
1 mM	1.0426 mL	5.2132 mL	10.4264 mL
5 mM	0.2085 mL	1.0426 mL	2.0853 mL
10 mM	0.1043 mL	0.5213 mL	1.0426 mL
50 mM	0.0209 mL	0.1043 mL	0.2085 mL

Please select the appropriate solvent to prepare the stock solution, according to the solubility of the product in different solvents. Please use it as soon as possible.

Note: The dilution table applies only to solid products. For liquid products, please calculate the stock solution based on the stated concentration and/or density.

Reference

Shen CH, et al. Crustacean cardioactive peptide as a stimulator of feeding and a regulator of ecdysis in *Leptinotarsa decemlineata*. *Pestic Biochem Physiol*. 2021 Jun;175:104838.

Inhibitor · Natural Compounds · Compound Libraries · Recombinant Proteins

This product is for Research Use Only · Not for Human or Veterinary or Therapeutic Use

Tel:781-999-4286 E_mail:info@targetmol.com Address:34 Washington Street,Wellesley Hills,MA 02481