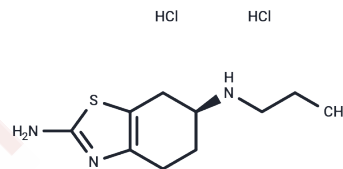


Pramipexole dihydrochloride

Chemical Properties

CAS No. :	104632-25-9
Formula:	C ₁₀ H ₁₈ ClN ₃ S
Molecular Weight:	247.79
Storage:	Powder: -20°C for 3 years In solvent: -80°C for 1 year Actual storage temperature shall be subject to the COA.



Biological Description

Description	Pramipexole dihydrochloride could be used to treat Parkinson disease.
Targets(IC50)	Dopamine Receptor

Preparing Stock Solutions

	1mg	5mg	10mg
1 mM	4.0357 mL	20.1784 mL	40.3568 mL
5 mM	0.8071 mL	4.0357 mL	8.0714 mL
10 mM	0.4036 mL	2.0178 mL	4.0357 mL
50 mM	0.0807 mL	0.4036 mL	0.8071 mL

Please select the appropriate solvent to prepare the stock solution, according to the solubility of the product in different solvents. Please use it as soon as possible.

Note: The dilution table applies only to solid products. For liquid products, please calculate the stock solution based on the stated concentration and/or density.

Inhibitor · Natural Compounds · Compound Libraries · Recombinant Proteins

This product is for Research Use Only · Not for Human or Veterinary or Therapeutic Use

Tel:781-999-4286 E_mail:info@targetmol.com Address:34 Washington Street,Wellesley Hills,MA 02481