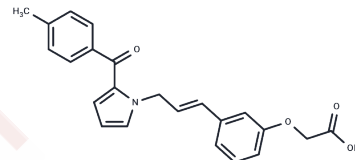


## Pyrrole-derivative1

## Chemical Properties

CAS No. :	474006-30-9
Formula:	C <sub>23</sub> H <sub>21</sub> NO <sub>4</sub>
Molecular Weight:	375.42
Storage:	Powder: -20°C for 3 years   In solvent: -80°C for 1 year Actual storage temperature shall be subject to the COA.



## Biological Description

Description	Pyrrole-derivative1 is used for the research of the diabetic disease.
Targets(IC50)	Others

## Preparing Stock Solutions

	1mg	5mg	10mg
1 mM	2.6637 mL	13.3184 mL	26.6368 mL
5 mM	0.5327 mL	2.6637 mL	5.3274 mL
10 mM	0.2664 mL	1.3318 mL	2.6637 mL
50 mM	0.0533 mL	0.2664 mL	0.5327 mL

Please select the appropriate solvent to prepare the stock solution, according to the solubility of the product in different solvents. Please use it as soon as possible.

Note: The dilution table applies only to solid products. For liquid products, please calculate the stock solution based on the stated concentration and/or density.

## Reference

HY-U00059

**Inhibitor · Natural Compounds · Compound Libraries · Recombinant Proteins**

This product is for Research Use Only · Not for Human or Veterinary or Therapeutic Use

Tel:781-999-4286 E\_mail:info@targetmol.com Address:34 Washington Street,Wellesley Hills,MA 02481