

## [Ala107]-MBP (104-118) acetate

## Chemical Properties

CAS No. :

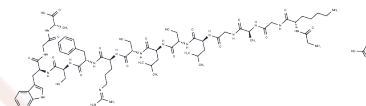
Formula: C59H108N20O21

Molecular Weight: 1553.72

Keep away from moisture

Storage: Powder: -20°C for 3 years | In solvent: -80°C for 1 year

Actual storage temperature shall be subject to the COA.



## Biological Description

|               |   |
|---------------|---|
| Description   | [Ala107]-MBP (104-118) acetate ([Ala107]-MBP ) is synthetic peptide analog of bovine myelin basic protein (MBP). Non-competitive inhibitor of PKC (IC50 = 46 - 145 mM). |
| Targets(IC50) | PKC   |

## Solubility Information

|            |   |
|------------|---|
| Solubility | H2O: 2.5 mM, Sonication is recommended.<br>DMSO: Insoluble,<br>( < 1 mg/ml refers to the product slightly soluble or insoluble) |
|------------|---|

## Preparing Stock Solutions

|       | 1mg       | 5mg       | 10mg      |
|-------|-----------|-----------|-----------|
| 1 mM  | 0.6436 mL | 3.2181 mL | 6.4362 mL |
| 5 mM  | 0.1287 mL | 0.6436 mL | 1.2872 mL |
| 10 mM | 0.0644 mL | 0.3218 mL | 0.6436 mL |
| 50 mM | 0.0129 mL | 0.0644 mL | 0.1287 mL |

Please select the appropriate solvent to prepare the stock solution, according to the solubility of the product in different solvents. Please use it as soon as possible.

Note: The dilution table applies only to solid products. For liquid products, please calculate the stock solution based on the stated concentration and/or density.

## Reference

Su et al (1986) Synthetic myelin basic protein peptide analogs are specific inhibitors of phospholipid/calcium-dependent protein kinase (protein kinase C). Biochem.Biophys.Res.Commun. 134 78 PMID:

Turner et al (1985) Substrate specificity of phospholipid/Ca<sup>2+</sup> dependent protein kinase as probed with synthetic peptide fragments of the bovine myelin basic protein. J.Biol.Chem. 260 11503 PMID:

**Inhibitor · Natural Compounds · Compound Libraries · Recombinant Proteins**

This product is for Research Use Only · Not for Human or Veterinary or Therapeutic Use

Tel:781-999-4286 E\_mail:info@targetmol.com Address:34 Washington Street,Wellesley Hills,MA 02481