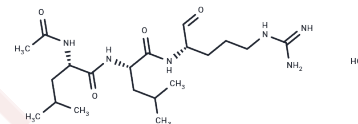


Leupeptin HCl

Chemical Properties

CAS No. :	39740-82-4
Formula:	C ₂₀ H ₃₉ ClN ₆ O ₄
Molecular Weight:	463.01
Storage:	Powder: -20°C for 3 years In solvent: -80°C for 1 year Actual storage temperature shall be subject to the COA.



Biological Description

Description	Leupeptin is a naturally occurring protease inhibitor that can inhibit cysteine, serine and threonine peptidases. Leupeptin is an organic compound produced by actinomycetes. Leupeptin inhibits serine proteinases (trypsin (K _i =3.5 nM), plasmin (K _i = 3.4 nM), porcine kallikrein), and cysteine proteinases (papain, cathepsin B (K _i = 4.1 nM), endoproteinase Lys-C). It does not inhibit α-chymotrypsin or thrombin. Leupeptin is a competitive transition state inhibitor and its inhibition may be relieved by an excess of substrate.
Targets(IC50)	Others

Preparing Stock Solutions

	1mg	5mg	10mg
1 mM	2.1598 mL	10.7989 mL	21.5978 mL
5 mM	0.432 mL	2.1598 mL	4.3196 mL
10 mM	0.216 mL	1.0799 mL	2.1598 mL
50 mM	0.0432 mL	0.216 mL	0.432 mL

Please select the appropriate solvent to prepare the stock solution, according to the solubility of the product in different solvents. Please use it as soon as possible.

Note: The dilution table applies only to solid products. For liquid products, please calculate the stock solution based on the stated concentration and/or density.

Inhibitor · Natural Compounds · Compound Libraries · Recombinant Proteins

This product is for Research Use Only · Not for Human or Veterinary or Therapeutic Use

Tel:781-999-4286 E_mail:info@targetmol.com Address:34 Washington Street,Wellesley Hills,MA 02481