

## Prothipendyl

## Chemical Properties

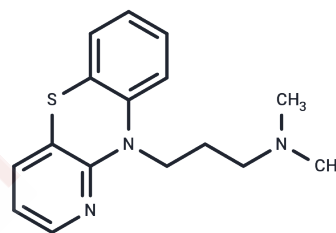
CAS No. : 303-69-5

Formula: C<sub>16</sub>H<sub>19</sub>N<sub>3</sub>S

Molecular Weight: 285.41

Storage: Powder: -20°C for 3 years | In solvent: -80°C for 1 year

Actual storage temperature shall be subject to the COA.



## Biological Description

Description	Prothipendyl is a neuroleptic azaphenothiazine.
Targets(IC50)	Others

## Preparing Stock Solutions

	1mg	5mg	10mg
1 mM	3.5037 mL	17.5187 mL	35.0373 mL
5 mM	0.7007 mL	3.5037 mL	7.0075 mL
10 mM	0.3504 mL	1.7519 mL	3.5037 mL
50 mM	0.0701 mL	0.3504 mL	0.7007 mL

Please select the appropriate solvent to prepare the stock solution, according to the solubility of the product in different solvents. Please use it as soon as possible.

Note: The dilution table applies only to solid products. For liquid products, please calculate the stock solution based on the stated concentration and/or density.

### Reference

Caspar AT, Meyer MR, Maurer HH. Blood plasma level determination using an automated LC-MS(n) screening system and electronically stored calibrations exemplified for 22 drugs and two active metabolites often requested in emergency toxicology. *Drug Test Anal.* 2018 Jul 16. doi: 10.1002/dta.2466. [Epub ahead of print] PubMed PMID: 30011134.

Krämer M, Heese P, Banger M, Madea B, Hess C. Range of therapeutic prothipendyl and prothipendyl sulfoxide concentrations in clinical blood samples. *Drug Test Anal.* 2018 Jun;10(6):1009-1016. doi: 10.1002/dta.2319. Epub 2017 Nov 13. PubMed PMID: 29027369.

Krämer M, Broecker S, Madea B, Hess C. Confirmation of metabolites of the neuroleptic drug prothipendyl using human liver microsomes, specific CYP enzymes and authentic forensic samples-Benefit for routine drug testing. *J Pharm Biomed Anal.* 2017 Oct 25;145:517-524. doi: 10.1016/j.jpba.2017.07.011. Epub 2017 Jul 12. PubMed PMID: 28756170.

Paulzen M, Schoretsanitis G, Stegmann B, Hiemke C, Gründer G, Schruers KRJ, Walther S, Lammertz SE, Haen E. Pharmacokinetic considerations in antipsychotic augmentation strategies: How to combine risperidone with low-potency antipsychotics. *Prog Neuropsychopharmacol Biol Psychiatry.* 2017 Jun 2;76:101-106. doi: 10.1016/j.pnpbp.2017.03.002. Epub 2017 Mar 14. PubMed PMID: 28302501.

**Inhibitor · Natural Compounds · Compound Libraries · Recombinant Proteins**

This product is for Research Use Only · Not for Human or Veterinary or Therapeutic Use

Tel:781-999-4286 E\_mail:info@targetmol.com Address:34 Washington Street,Wellesley Hills,MA 02481