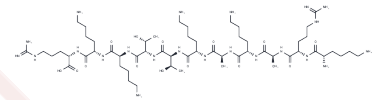


## Lys-arg-ala-lys-ala-lys-thr-thr-lys-lys-arg

## Chemical Properties

CAS No. :	118675-77-7
Formula:	C <sub>56</sub> H <sub>110</sub> N <sub>22</sub> O <sub>14</sub>
Molecular Weight:	1315.61
Storage:	Keep away from moisture Powder: -20°C for 3 years   In solvent: -80°C for 1 year <small>Actual storage temperature shall be subject to the COA.</small>



## Biological Description

Description	Lys-arg-ala-lys-ala-lys-thr-thr-lys-lys-arg is a protein kinase C substrate.
Targets(IC50)	PKC

## Preparing Stock Solutions

	1mg	5mg	10mg
1 mM	0.7601 mL	3.8005 mL	7.601 mL
5 mM	0.152 mL	0.7601 mL	1.5202 mL
10 mM	0.076 mL	0.3801 mL	0.7601 mL
50 mM	0.0152 mL	0.076 mL	0.152 mL

Please select the appropriate solvent to prepare the stock solution, according to the solubility of the product in different solvents. Please use it as soon as possible.

Note: The dilution table applies only to solid products. For liquid products, please calculate the stock solution based on the stated concentration and/or density.

## Reference

- Tu WZ, Li B, Huang B, Wang Y, Liu XD, Guan H, Zhang SM, Tang Y, Rang WQ, Zhou PK.  $\gamma$ H2AX foci formation in the absence of DNA damage: mitotic H2AX phosphorylation is mediated by the DNA-PKcs/CHK2 pathway. *FEBS Lett.* 2013 Nov 1;587(21):3437-43. doi: 10.1016/j.febslet.2013.08.028. Epub 2013 Sep 8. PubMed PMID: 24021642.
- Sakata K, Matsumoto Y, Tauchi H, Satoh M, Oouchi A, Nagakura H, Koito K, Hosoi Y, Suzuki N, Komatsu K, Hareyama M. Expression of genes involved in repair of DNA double-strand breaks in normal and tumor tissues. *Int J Radiat Oncol Biol Phys.* 2001 Jan 1;49(1):161-7. PubMed PMID: 11163510.
- Grode SH, Strother DS, Runge TA, Dobrowolski PJ. Hydrogen fluoride catalyzed migration of side chain protecting groups onto Fmoc during solid phase peptide synthesis. Characterization by CF-FAB analysis of carboxypeptidase digestions and NMR spectroscopy. *Int J Pept Protein Res.* 1992 Dec;40(6):538-45. PubMed PMID: 1286938.

**Inhibitor · Natural Compounds · Compound Libraries · Recombinant Proteins**

This product is for Research Use Only · Not for Human or Veterinary or Therapeutic Use

Tel:781-999-4286 E\_mail:info@targetmol.com Address:34 Washington Street,Wellesley Hills,MA 02481