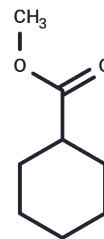


## Methyl cyclohexanecarboxylate

## Chemical Properties

CAS No. :	4630-82-4
Formula:	C <sub>8</sub> H <sub>14</sub> O <sub>2</sub>
Molecular Weight:	142.2
Storage:	Powder: -20°C for 3 years   In solvent: -80°C for 1 year Actual storage temperature shall be subject to the COA.



## Biological Description

Description	Methyl cyclohexanecarboxylate (Methyl hexahydrobenzoate) is an endogenous metabolite and used as a material for chemical synthesis. Methyl cyclohexanecarboxylate is a flavouring ingredient with berry, estery, and fruity tasting.
Targets(IC50)	Endogenous Metabolite

## Solubility Information

Solubility	DMSO: 99 mg/mL (696.2 mM),Sonication is recommended. (< 1 mg/ml refers to the product slightly soluble or insoluble)
In vivo Formulation	10% DMSO+40% PEG300+5% Tween 80+45% Saline: 3.3 mg/mL (23.21 mM),Sonication is recommended. <i>Please add the solvents sequentially, clarifying the solution as much as possible before adding the next one. Dissolve by heating and/or sonication if necessary. Working solution is recommended to be prepared and used immediately. The formulation provided above is for reference purposes only. In vivo formulations may vary and should be modified based on specific experimental conditions.</i>

## Preparing Stock Solutions

	1mg	5mg	10mg
1 mM	7.0323 mL	35.1617 mL	70.3235 mL
5 mM	1.4065 mL	7.0323 mL	14.0647 mL
10 mM	0.7032 mL	3.5162 mL	7.0323 mL
50 mM	0.1406 mL	0.7032 mL	1.4065 mL

Please select the appropriate solvent to prepare the stock solution, according to the solubility of the product in different solvents. Please use it as soon as possible.

Note: The dilution table applies only to solid products. For liquid products, please calculate the stock solution based on the stated concentration and/or density.

Reference

Yannai, S. (Ed.). (2003). Dictionary of Food Compounds with CD-ROM: Additives, Flavors, and Ingredients (1st ed.). Chapman and Hall/CRC.

**Inhibitor · Natural Compounds · Compound Libraries · Recombinant Proteins**

This product is for Research Use Only · Not for Human or Veterinary or Therapeutic Use

Tel:781-999-4286 E\_mail:info@targetmol.com Address:34 Washington Street,Wellesley Hills,MA 02481