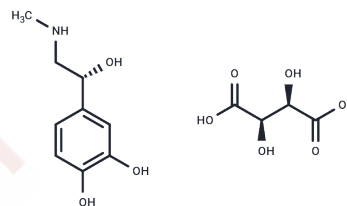


## Epinephrine bitartrate

## Chemical Properties

CAS No. :	51-42-3
Formula:	C <sub>13</sub> H <sub>19</sub> N <sub>1</sub> O <sub>9</sub>
Molecular Weight:	333.3
Storage:	Powder: -20°C for 3 years   In solvent: -80°C for 1 year Actual storage temperature shall be subject to the COA.



## Biological Description

Description	L-Epinephrine Bitartrate is alpha- and beta-adrenergic receptor stimulator.
Targets(IC50)	Endogenous Metabolite, Adrenergic Receptor, TNF

## Solubility Information

Solubility	H <sub>2</sub> O: 250 mg/mL (750.08 mM), Sonication is recommended. Ethanol: <1 mg/mL, DMSO: 62 mg/mL (186.02 mM), Sonication is recommended. (< 1 mg/ml refers to the product slightly soluble or insoluble)
In vivo Formulation	10% DMSO+40% PEG300+5% Tween 80+45% Saline: 2 mg/mL (6 mM), Sonication is recommended. <i>Please add the solvents sequentially, clarifying the solution as much as possible before adding the next one. Dissolve by heating and/or sonication if necessary. Working solution is recommended to be prepared and used immediately. The formulation provided above is for reference purposes only. In vivo formulations may vary and should be modified based on specific experimental conditions.</i>

## Preparing Stock Solutions

	1mg	5mg	10mg
1 mM	3.0003 mL	15.0015 mL	30.003 mL
5 mM	0.6001 mL	3.0003 mL	6.0006 mL
10 mM	0.300 mL	1.5002 mL	3.0003 mL
50 mM	0.060 mL	0.300 mL	0.6001 mL

Please select the appropriate solvent to prepare the stock solution, according to the solubility of the product in different solvents. Please use it as soon as possible.

Note: The dilution table applies only to solid products. For liquid products, please calculate the stock solution based on the stated concentration and/or density.

Reference

Berecek KH, et al. Am J Physiol, 1982, 242(4):H593-601.

**Inhibitor · Natural Compounds · Compound Libraries · Recombinant Proteins**

This product is for Research Use Only · Not for Human or Veterinary or Therapeutic Use

Tel:781-999-4286 E\_mail:info@targetmol.com Address:34 Washington Street,Wellesley Hills,MA 02481