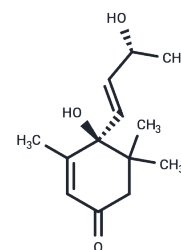


## Vomifoliol

## Chemical Properties

|                   |  |
|-------------------|--|
| CAS No. :         | 23526-45-6   |
| Formula:          | C <sub>13</sub> H <sub>20</sub> O <sub>3</sub>   |
| Molecular Weight: | 224.3  |
| Storage:          | Keep away from direct sunlight<br>Powder: -20°C for 3 years   In solvent: -80°C for 1 year<br><i>Actual storage temperature shall be subject to the COA.</i> |



## Biological Description

|               |  |
|---------------|--|
| Description   | Vomifoliol is a plant-derived compound likely serving as the immediate precursor of dehydrovomifoliol due to its metabolic conversion from abscisic acid. Vomifoliol, in conjunction with Stigmasterol, exhibits antiproliferative activity on human lung cancer cell lines, making Vomifoliol relevant in studies of plant metabolite biotransformation and anticancer bioactivity. |
| Targets(IC50) | Others,Endogenous Metabolite,Cholinesterase (ChE)  |

## Solubility Information

|                     |  |
|---------------------|--|
| Solubility          | DMSO: 40 mg/mL (178.33 mM),Sonication is recommended.<br>(< 1 mg/ml refers to the product slightly soluble or insoluble)   |
| In vivo Formulation | 10% DMSO+40% PEG300+5% Tween-80+45% Saline: 1.5 mg/mL (6.69 mM),Sonication is recommended.<br><i>Please add the solvents sequentially, clarifying the solution as much as possible before adding the next one. Dissolve by heating and/or sonication if necessary. Working solution is recommended to be prepared and used immediately. The formulation provided above is for reference purposes only. In vivo formulations may vary and should be modified based on specific experimental conditions.</i> |

### Preparing Stock Solutions

---

|       | 1mg       | 5mg        | 10mg       |
|-------|-----------|------------|------------|
| 1 mM  | 4.4583 mL | 22.2916 mL | 44.5831 mL |
| 5 mM  | 0.8917 mL | 4.4583 mL  | 8.9166 mL  |
| 10 mM | 0.4458 mL | 2.2292 mL  | 4.4583 mL  |
| 50 mM | 0.0892 mL | 0.4458 mL  | 0.8917 mL  |

---

Please select the appropriate solvent to prepare the stock solution, according to the solubility of the product in different solvents. Please use it as soon as possible.

Note: The dilution table applies only to solid products. For liquid products, please calculate the stock solution based on the stated concentration and/or density.

### Reference

Stuart KL, et al. The effect of vomifoliol on stomatal aperture. *Planta*. 1975;122(3):307-310.

Mogana R, et al. The antiacetylcholinesterase and antileishmanial activities of *Canarium patentinervium* Miq. *Biomed Res Int*. 2014;2014:903529.

**Inhibitor · Natural Compounds · Compound Libraries · Recombinant Proteins**

This product is for Research Use Only · Not for Human or Veterinary or Therapeutic Use

Tel:781-999-4286 E\_mail:info@targetmol.com Address:34 Washington Street,Wellesley Hills,MA 02481