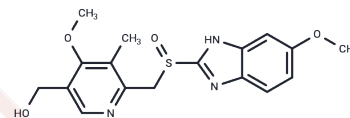


5-hydroxy Omeprazole

Chemical Properties

CAS No. :	92340-57-3
Formula:	C17H19N3O4S
Molecular Weight:	361.42
Storage:	Powder: -20°C for 3 years In solvent: -80°C for 1 year Actual storage temperature shall be subject to the COA.



Biological Description

Description	5-hydroxy Omeprazole is one of the major metabolites of the proton pump inhibitor omeprazole in the body; it is formed by hydroxylation catalyzed by the CYP2C19 and CYP3A4 enzymes in the liver. 5-hydroxy Omeprazole can be used in pharmacokinetic studies.
Targets(IC50)	Others,Proton pump,Drug Metabolite

Solubility Information

Solubility	Ethanol: 1 mg/mL (2.77 mM),Sonication is recommended. DMF: 10 mg/mL (27.67 mM),Sonication is recommended. DMSO: 5 mg/mL (13.83 mM),Sonication is recommended. (< 1 mg/ml refers to the product slightly soluble or insoluble)
------------	--

Preparing Stock Solutions

	1mg	5mg	10mg
1 mM	2.7669 mL	13.8343 mL	27.6686 mL
5 mM	0.5534 mL	2.7669 mL	5.5337 mL
10 mM	0.2767 mL	1.3834 mL	2.7669 mL
50 mM	0.0553 mL	0.2767 mL	0.5534 mL

Please select the appropriate solvent to prepare the stock solution, according to the solubility of the product in different solvents. Please use it as soon as possible.

Note: The dilution table applies only to solid products. For liquid products, please calculate the stock solution based on the stated concentration and/or density.

Reference

William E, et al. Hydroxyomeprazole compositions and uses. WO1999056746A1.

Abelö, A., Andersson, T.B., Antonsson, M., et al. Stereoselective metabolism of omeprazole by human cytochrome P450 enzymes. Drug Metab. Dispos. 28(8), 966-972 (2000).

Karam, W.G., Goldstein, J.A., Lasker, J.M., et al. Human CYP2C19 is a major omeprazole 5-hydroxylase, as demonstrated with recombinant cytochrome P450 enzymes. Drug Metab. Dispos. 24, 1081-1087 (1996).

Inhibitor · Natural Compounds · Compound Libraries · Recombinant Proteins

This product is for Research Use Only · Not for Human or Veterinary or Therapeutic Use

Tel:781-999-4286 E_mail:info@targetmol.com Address:34 Washington Street,Wellesley Hills,MA 02481