

Suc-AAP-Abu-pNA

Chemical Properties

CAS No. : 108392-27-4

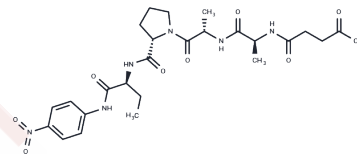
Formula: C₂₅H₃₄N₆O₉

Molecular Weight: 562.57

Keep away from moisture

Storage: Powder: -20°C for 3 years | In solvent: -80°C for 1 year

Actual storage temperature shall be subject to the COA.



Biological Description

Description	Suc-AAP-Abu-pNA is a specific substrate for pancreatic elastase ($K_m = 100 \mu\text{M}$; $K_{cat}/K_m = 35,300 \text{ s}^{-1} \text{ M}^{-1}$ for rat pancreatic elastase; $K_m = 30 \mu\text{M}$; $K_{cat}/K_m = 351,000 \text{ s}^{-1} \text{ M}^{-1}$ for porcine pancreatic elastase).
Targets(IC50)	Serine Protease

Solubility Information

Solubility	H ₂ O: 1 mg/mL (1.78 mM), Sonication is recommended. ($< 1 \text{ mg/ml}$ refers to the product slightly soluble or insoluble)
------------	---

Preparing Stock Solutions

	1mg	5mg	10mg
1 mM	1.7776 mL	8.8878 mL	17.7756 mL
5 mM	0.3555 mL	1.7776 mL	3.5551 mL
10 mM	0.1778 mL	0.8888 mL	1.7776 mL
50 mM	0.0356 mL	0.1778 mL	0.3555 mL

Please select the appropriate solvent to prepare the stock solution, according to the solubility of the product in different solvents. Please use it as soon as possible.

Note: The dilution table applies only to solid products. For liquid products, please calculate the stock solution based on the stated concentration and/or density.

Inhibitor · Natural Compounds · Compound Libraries · Recombinant Proteins

This product is for Research Use Only · Not for Human or Veterinary or Therapeutic Use

Tel: 781-999-4286

E_mail: info@targetmol.com

Address: 34 Washington Street, Wellesley Hills, MA 02481