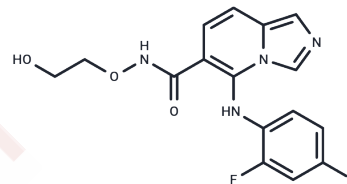


GDC-0623

Chemical Properties

CAS No. : 1168091-68-6
 Formula: C₁₆H₁₄FIN₄O₃
 Molecular Weight: 456.21
 Storage: Powder: -20°C for 3 years | In solvent: -80°C for 1 year
 Actual storage temperature shall be subject to the COA.



Biological Description

Description	GDC-0623 (RG 7421) is a potent, ATP-uncompetitive MEK1 inhibitor with a K_i of 0.13 nM, currently in Phase 1.
Targets(IC50)	Apoptosis,MEK

Solubility Information

Solubility	H ₂ O: < 1 mg/mL (insoluble or slightly soluble), Ethanol: 5 mg/mL (10.96 mM),Sonication is recommended. DMSO: 91 mg/mL (199.47 mM),Heating is recommended. (< 1 mg/ml refers to the product slightly soluble or insoluble)
In vivo Formulation	10% DMSO+40% PEG300+5% Tween 80+45% Saline: 3.3 mg/mL (7.23 mM),Sonication is recommended. <i>Please add the solvents sequentially, clarifying the solution as much as possible before adding the next one. Dissolve by heating and/or sonication if necessary. Working solution is recommended to be prepared and used immediately. The formulation provided above is for reference purposes only. In vivo formulations may vary and should be modified based on specific experimental conditions.</i>

Preparing Stock Solutions

	1mg	5mg	10mg
1 mM	2.192 mL	10.9599 mL	21.9197 mL
5 mM	0.4384 mL	2.192 mL	4.3839 mL
10 mM	0.2192 mL	1.096 mL	2.192 mL
50 mM	0.0438 mL	0.2192 mL	0.4384 mL

Please select the appropriate solvent to prepare the stock solution, according to the solubility of the product in different solvents. Please use it as soon as possible.

Note: The dilution table applies only to solid products. For liquid products, please calculate the stock solution based on the stated concentration and/or density.

Reference

Hatzivassiliou G, et al. Nature. 2013, 501(7466), 232-236.

Zaanan A, et al. J Biol Chem. 2015. doi/10.1074/jbc.M115.657833.

Inhibitor · Natural Compounds · Compound Libraries · Recombinant Proteins

This product is for Research Use Only · Not for Human or Veterinary or Therapeutic Use

Tel:781-999-4286 E_mail:info@targetmol.com Address:34 Washington Street,Wellesley Hills,MA 02481