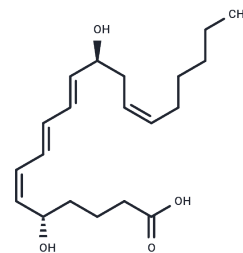


## 12-epi Leukotriene B4

## Chemical Properties

CAS No. :	83709-73-3
Formula:	C <sub>20</sub> H <sub>32</sub> O <sub>4</sub>
Molecular Weight:	336.472
Storage:	Powder: -20°C for 3 years   In solvent: -80°C for 1 year Actual storage temperature shall be subject to the COA.



## Biological Description

Description	Leukotriene B4 (LTB4) compounds are produced by both enzymatic and non-enzymatic processes. The products of enzymatic origin, via Leukotriene A4 (LTA4) hydrolase, are stereospecifically 12(R). Non-enzymatic hydrolysis products are 50:50 mixtures at C-12, but are almost exclusively trans at C-6. Thus, the non-enzymatic hydrolysis product of LTA4 is 6-trans-12-epi LTB4. 12-epi LTB4 is an isomer which would not be expected to occur in either non-enzymatic hydrolysis products, or in the enzymatic products of LTA4 hydrolase. Compared to LTB4, 12-epi LTB4 has significantly reduced activity for the LTB4 receptor on human neutrophils (IC <sub>50</sub> of 7.5 mM), and on guinea pig lung membranes with a (K <sub>i</sub> of 4.7 mM). 12-epi LTB4 is a weak agonist at both the recombinant human BLT1 and BLT2 receptors, requiring approximately 10 mM for full activation of the receptor.
Targets(IC <sub>50</sub> )	Others,Leukotriene Receptor

## Solubility Information

Solubility	Ethanol: >50 mg/mL,Sonication is recommended. PBS (pH 7.2): >1 mg/mL,Sonication is recommended. DMF: >50 mg/mL,Sonication is recommended. DMSO: >50 mg/mL,Sonication is recommended. (< 1 mg/ml refers to the product slightly soluble or insoluble)
------------	--

### Preparing Stock Solutions

---

	<b>1mg</b>	<b>5mg</b>	<b>10mg</b>
1 mM	2.972 mL	14.8602 mL	29.7203 mL
5 mM	0.5944 mL	2.972 mL	5.9441 mL
10 mM	0.2972 mL	1.486 mL	2.972 mL
50 mM	0.0594 mL	0.2972 mL	0.5944 mL

---

Please select the appropriate solvent to prepare the stock solution, according to the solubility of the product in different solvents. Please use it as soon as possible.

Note: The dilution table applies only to solid products. For liquid products, please calculate the stock solution based on the stated concentration and/or density.

**Inhibitor · Natural Compounds · Compound Libraries · Recombinant Proteins**

This product is for Research Use Only · Not for Human or Veterinary or Therapeutic Use

Tel:781-999-4286 E\_mail:info@targetmol.com Address:34 Washington Street,Wellesley Hills,MA 02481