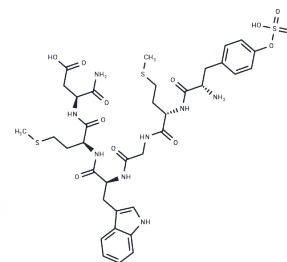


## Cholecystokinin (27-32)-amide

## Chemical Properties

CAS No. :	86367-90-0
Formula:	C36H48N8O12S3
Molecular Weight:	881.01
Storage:	Keep away from moisture Powder: -20°C for 3 years   In solvent: -80°C for 1 year <small>Actual storage temperature shall be subject to the COA.</small>



## Biological Description

Description	Cholecystokinin (27-32)-amide is a CCK receptor antagonist.
Targets(IC50)	Others,Cholecystokinin Receptor

## Preparing Stock Solutions

	1mg	5mg	10mg
1 mM	1.1351 mL	5.6753 mL	11.3506 mL
5 mM	0.227 mL	1.1351 mL	2.2701 mL
10 mM	0.1135 mL	0.5675 mL	1.1351 mL
50 mM	0.0227 mL	0.1135 mL	0.227 mL

Please select the appropriate solvent to prepare the stock solution, according to the solubility of the product in different solvents. Please use it as soon as possible.

Note: The dilution table applies only to solid products. For liquid products, please calculate the stock solution based on the stated concentration and/or density.

## Reference

- Tarasova NI, Stauber RH, Choi JK, Hudson EA, Czerwinski G, Miller JL, Pavlakis GN, Michejda CJ, Wank SA. Visualization of G protein-coupled receptor trafficking with the aid of the green fluorescent protein. Endocytosis and recycling of cholecystokinin receptor type A. *J Biol Chem.* 1997 Jun 6;272(23):14817-24. PubMed PMID: 9169450.
- Staley J, Jensen RT, Moody TW. CCK antagonists interact with CCK-B receptors on human small cell lung cancer cells. *Peptides.* 1990 Sep-Oct;11(5):1033-6. PubMed PMID: 2178246.
- Menozzi D, Gardner JD, Jensen RT, Maton PN. Properties of receptors for gastrin and CCK on gastric smooth muscle cells. *Am J Physiol.* 1989 Jul;257(1 Pt 1):G73-9. PubMed PMID: 2473654.
- Barone FC, Bondinell WE, Labosh TJ, White RF, Ormsbee HS 3rd. Cholecystokinin stimulates neuronal receptors to produce contraction of the canine colon. *Life Sci.* 1989;44(8):533-42. PubMed PMID: 2927258.

**Inhibitor · Natural Compounds · Compound Libraries · Recombinant Proteins**

This product is for Research Use Only · Not for Human or Veterinary or Therapeutic Use

Tel:781-999-4286 E\_mail:info@targetmol.com Address:34 Washington Street,Wellesley Hills,MA 02481