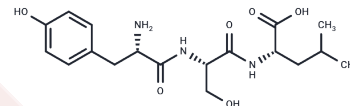


Tyroserleutide

Chemical Properties

CAS No. :	138168-48-6
Formula:	C ₁₈ H ₂₇ N ₃ O ₆
Molecular Weight:	381.42
Storage:	Keep away from moisture Powder: -20°C for 3 years In solvent: -80°C for 1 year <small>Actual storage temperature shall be subject to the COA.</small>



Biological Description

Description	Tyroserleutide (YSL), a small molecular tripeptide isolated from porcine spleen degradation products, inhibits the growth and metastasis of human hepatocellular carcinoma (HCC) both in vitro and in vivo.
Targets(IC50)	Others
In vitro	Tyroserleutide (YSL) exhibits immunomodulatory properties, notably enhancing concanavalin (ConA) induced proliferation of mouse spleen lymphocytes, augmenting phagocytosis in mouse peritoneal macrophages, and boosting natural killer (NK) cell activity[1]. Additionally, as an immunotherapeutic tripeptide, YSL promotes apoptosis in hepatocarcinoma cells (H22) by downregulating Bcl-2 and cyclin D1 expression[2], establishing it as an effective agent for liver tumor cell apoptosis induction[2]. Moreover, YSL effectively inhibits tumor growth and cell migration without causing significant toxicities in major organs[2].

Solubility Information

Solubility	H ₂ O: Soluble, (< 1 mg/ml refers to the product slightly soluble or insoluble)
------------	---

Preparing Stock Solutions

	1mg	5mg	10mg
1 mM	2.6218 mL	13.1089 mL	26.2178 mL
5 mM	0.5244 mL	2.6218 mL	5.2436 mL
10 mM	0.2622 mL	1.3109 mL	2.6218 mL
50 mM	0.0524 mL	0.2622 mL	0.5244 mL

Please select the appropriate solvent to prepare the stock solution, according to the solubility of the product in different solvents. Please use it as soon as possible.

Note: The dilution table applies only to solid products. For liquid products, please calculate the stock solution based on the stated concentration and/or density.

Reference

Wang C, et al. Studies on the large scale synthesis and anti-tumor activity of YSL. Prep Biochem Biotechnol. 2003 Aug;33(3):189-95.

Inhibitor · Natural Compounds · Compound Libraries · Recombinant Proteins

This product is for Research Use Only · Not for Human or Veterinary or Therapeutic Use

Tel:781-999-4286 E_mail:info@targetmol.com Address:34 Washington Street,Wellesley Hills,MA 02481