

## Azaphen

### Chemical Properties

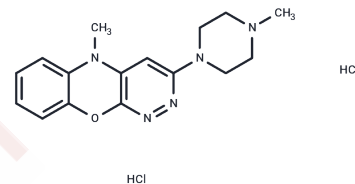
CAS No. : 24853-80-3

Formula: C<sub>16</sub>H<sub>21</sub>Cl<sub>2</sub>N<sub>5</sub>O

Molecular Weight: 370.28

Storage: Pure form: -20°C for 3 years | In solvent: -80°C for 1 year

Actual storage temperature shall be subject to the COA.



### Biological Description

Description	Azaphen (Pipofezin hydrochloride) is the reuptake of serotonin inhibitor with antidepressant action and has sedative effects, suggesting antihistamine activity.
Targets(IC50)	5-HT Receptor, Serotonin Transporter

### Solubility Information

Solubility	DMSO: Insoluble, H <sub>2</sub> O: 10 mM, Sonication is recommended. ( $< 1$ mg/ml refers to the product slightly soluble or insoluble)
------------	---

### Preparing Stock Solutions

	1mg	5mg	10mg
1 mM	2.7007 mL	13.5033 mL	27.0066 mL
5 mM	0.5401 mL	2.7007 mL	5.4013 mL
10 mM	0.2701 mL	1.3503 mL	2.7007 mL
50 mM	0.054 mL	0.2701 mL	0.5401 mL

Please select the appropriate solvent to prepare the stock solution, according to the solubility of the product in different solvents. Please use it as soon as possible.

Note: The dilution table applies only to solid products. For liquid products, please calculate the stock solution based on the stated concentration and/or density.

### Reference

Aleeva G N , Molodavkin G M , Voronina T A . Comparison of Antidepressant Effects of Azafan, Tianeptine, and Paroxetine[J]. Bull Exp Biol Med, 2009, 148(1):54-56.

**Inhibitor · Natural Compounds · Compound Libraries · Recombinant Proteins**

This product is for Research Use Only · Not for Human or Veterinary or Therapeutic Use

Tel:781-999-4286 E\_mail:info@targetmol.com Address:34 Washington Street,Wellesley Hills,MA 02481