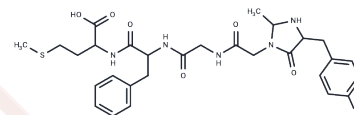


Enkephalin-met, acetaldehyde-

Chemical Properties

CAS No. :	74080-62-9
Formula:	C29H37N5O7S
Molecular Weight:	599.70
Storage:	Powder: -20°C for 3 years In solvent: -80°C for 1 year Actual storage temperature shall be subject to the COA.



Biological Description

Description	Enkephalin-met, a naturally occurring opioid peptide used to regulate the growth of human colon cancer, can be used as an effective negative regulator of human gastrointestinal cancer and may suggest pathways for tumor etiology, progression, treatment and prevention.
Targets(IC50)	Others

Preparing Stock Solutions

	1mg	5mg	10mg
1 mM	1.6675 mL	8.3375 mL	16.675 mL
5 mM	0.3335 mL	1.6675 mL	3.335 mL
10 mM	0.1668 mL	0.8338 mL	1.6675 mL
50 mM	0.0334 mL	0.1668 mL	0.3335 mL

Please select the appropriate solvent to prepare the stock solution, according to the solubility of the product in different solvents. Please use it as soon as possible.

Note: The dilution table applies only to solid products. For liquid products, please calculate the stock solution based on the stated concentration and/or density.

Reference

- Summers MC, Lightman SL. A reaction of acetaldehyde with enkephalins and related peptides. *Biochem Pharmacol.* 1981 Jun 15;30(12):1621-7. PubMed PMID: 6268105.
- Summers MC, Hayes RJ. Acetaldehyde-enkephalins: pronounced changes in the opiate activity of methionine-enkephalin and leucine-enkephalin on reaction with acetaldehyde. *FEBS Lett.* 1980 Apr 21;113(1):99-101. PubMed PMID: 6247206.
- Summers MC, Gidley MJ, Sanders JK. 'Acetaldehyde-enkephalins': elucidation of the structure of the acetaldehyde adducts of methionine-enkephalin and leucine-enkephalin. *FEBS Lett.* 1980 Mar 10;111(2):307-10. PubMed PMID: 7358173.

Inhibitor · Natural Compounds · Compound Libraries · Recombinant Proteins

This product is for Research Use Only · Not for Human or Veterinary or Therapeutic Use

Tel:781-999-4286 E_mail:info@targetmol.com Address:34 Washington Street,Wellesley Hills,MA 02481