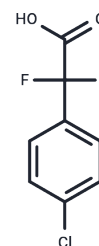


## 2-(4-chlorophenyl)-2,2-difluoroacetic acid

### Chemical Properties

CAS No. : 475301-73-6  
 Formula: C<sub>8</sub>H<sub>5</sub>ClF<sub>2</sub>O<sub>2</sub>  
 Molecular Weight: 206.57  
 Storage: Powder: -20°C for 3 years | In solvent: -80°C for 1 year  
*Actual storage temperature shall be subject to the COA.*



### Biological Description

**Description** 2-(4-chlorophenyl)-2,2-difluoroacetic acid, with CAS No. 475301-73-6, is a fragment molecule that serves as an important scaffold for molecular linking, expansion, and modification. 2-(4-chlorophenyl)-2,2-difluoroacetic acid provides a structural basis and research tool for the design and screening of novel drug candidates, and is commonly used in drug discovery, drug synthesis, and related research.

### Solubility Information

**Solubility** DMSO: 41.31 mg/mL (199.98 mM), Sonication is recommended.  
 (< 1 mg/ml refers to the product slightly soluble or insoluble)

### Preparing Stock Solutions

	1mg	5mg	10mg
1 mM	4.841 mL	24.2049 mL	48.4097 mL
5 mM	0.9682 mL	4.841 mL	9.6819 mL
10 mM	0.4841 mL	2.4205 mL	4.841 mL
50 mM	0.0968 mL	0.4841 mL	0.9682 mL

Please select the appropriate solvent to prepare the stock solution, according to the solubility of the product in different solvents. Please use it as soon as possible.

Note: The dilution table applies only to solid products. For liquid products, please calculate the stock solution based on the stated concentration and/or density.

**Inhibitor · Natural Compounds · Compound Libraries · Recombinant Proteins**

This product is for Research Use Only · Not for Human or Veterinary or Therapeutic Use

Tel: 781-999-4286 E\_mail: info@targetmol.com Address: 34 Washington Street, Wellesley Hills, MA 02481