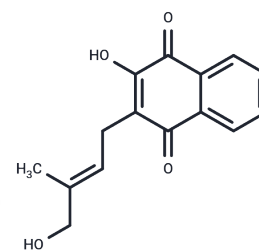


## Lomatiol

## Chemical Properties

CAS No. :	523-34-2
Formula:	C <sub>15</sub> H <sub>14</sub> O <sub>4</sub>
Molecular Weight:	258.27
Storage:	Powder: -20°C for 3 years   In solvent: -80°C for 1 year Actual storage temperature shall be subject to the COA.



## Biological Description

Description	Lomatiol is a quinone pigment found in flowering plants.
Targets(IC50)	Others

## Preparing Stock Solutions

	1mg	5mg	10mg
1 mM	3.8719 mL	19.3596 mL	38.7192 mL
5 mM	0.7744 mL	3.8719 mL	7.7438 mL
10 mM	0.3872 mL	1.936 mL	3.8719 mL
50 mM	0.0774 mL	0.3872 mL	0.7744 mL

Please select the appropriate solvent to prepare the stock solution, according to the solubility of the product in different solvents. Please use it as soon as possible.

Note: The dilution table applies only to solid products. For liquid products, please calculate the stock solution based on the stated concentration and/or density.

## Reference

- Loveday A, Sherar LB, Sanders JP, Sanderson PW, Esliger DW. Technologies That Assess the Location of Physical Activity and Sedentary Behavior: A Systematic Review. *J Med Internet Res*. 2015 Aug 5;17(8):e192. doi: 10.2196/jmir.4761. Review. PubMed PMID: 26245157; PubMed Central PMCID: PMC4705371.
- Rummel S, Hueman MT, Costantino N, Shriver CD, Ellsworth RE. Tumour location within the breast: Does tumour site have prognostic ability? *Ecanermedicalscience*. 2015 Jul 13;9:552. doi: 10.3332/ecancer.2015.552. eCollection 2015. PubMed PMID: 26284116; PubMed Central PMCID: PMC4531129.
- Amer N, Amer M, Kolkaila MA, Yaqoob S. Pregnancy of unknown location: Outcome in a tertiary care hospital. *J Pak Med Assoc*. 2015 Oct;65(10):1097-101. PubMed PMID: 26440841.
- Häkkinen S, Ovaska N, Rinne T. Processing of pitch and location in human auditory cortex during visual and auditory tasks. *Front Psychol*. 2015 Nov 6;6:1678. doi: 10.3389/fpsyg.2015.01678. eCollection 2015. PubMed PMID: 26594185; PubMed Central PMCID: PMC4635202.

**Inhibitor · Natural Compounds · Compound Libraries · Recombinant Proteins**

This product is for Research Use Only · Not for Human or Veterinary or Therapeutic Use

Tel:781-999-4286 E\_mail:info@targetmol.com Address:34 Washington Street,Wellesley Hills,MA 02481