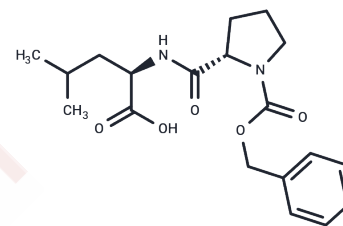


## Prolylleucine

## Chemical Properties

CAS No. :	61596-47-2
Formula:	C <sub>19</sub> H <sub>26</sub> N <sub>2</sub> O <sub>5</sub>
Molecular Weight:	362.42
Storage:	Keep away from moisture Powder: -20°C for 3 years   In solvent: -80°C for 1 year <small>Actual storage temperature shall be subject to the COA.</small>



## Biological Description

Description	Prolylleucine (((Benzyloxy)carbonyl)-L-prolyl-D-leucine) is a dipeptide containing branched-chain amino acids.
Targets(IC50)	Others

## Solubility Information

Solubility	DMSO: 100 mg/mL (275.92 mM),Sonication is recommended. (< 1 mg/ml refers to the product slightly soluble or insoluble)
In vivo Formulation	10% DMSO+40% PEG300+5% Tween 80+45% Saline: 4 mg/mL (11.04 mM),Sonication is recommended. <i>Please add the solvents sequentially, clarifying the solution as much as possible before adding the next one. Dissolve by heating and/or sonication if necessary. Working solution is recommended to be prepared and used immediately. The formulation provided above is for reference purposes only. In vivo formulations may vary and should be modified based on specific experimental conditions.</i>

## Preparing Stock Solutions

	1mg	5mg	10mg
1 mM	2.7592 mL	13.7961 mL	27.5923 mL
5 mM	0.5518 mL	2.7592 mL	5.5185 mL
10 mM	0.2759 mL	1.3796 mL	2.7592 mL
50 mM	0.0552 mL	0.2759 mL	0.5518 mL

Please select the appropriate solvent to prepare the stock solution, according to the solubility of the product in different solvents. Please use it as soon as possible.

Note: The dilution table applies only to solid products. For liquid products, please calculate the stock solution based on the stated concentration and/or density.

Reference

Hebert EM, et al. Characterization of the pattern of alphas1- and beta-casein breakdown and release of a bioactive peptide by a cell envelope proteinase from

**Inhibitor · Natural Compounds · Compound Libraries · Recombinant Proteins**

This product is for Research Use Only· Not for Human or Veterinary or Therapeutic Use

Tel:781-999-4286 E\_mail:info@targetmol.com Address:34 Washington Street,Wellesley Hills,MA 02481