

Diisopropyl phthalate

Chemical Properties

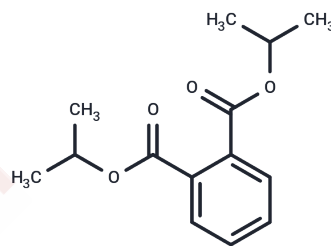
CAS No. : 605-45-8

Formula: C₁₄H₁₈O₄

Molecular Weight: 250.29

Storage: Pure form: -20°C for 3 years | In solvent: -80°C for 1 year

Actual storage temperature shall be subject to the COA.



Biological Description

Description	Diisopropyl phthalate is widely used as an additive in plastics and consumer products in the chemical industries.
Targets(IC50)	Estrogen Receptor/ERR,Others

Solubility Information

Solubility DMSO: 50 mg/mL (199.77 mM),Sonication is recommended.
(< 1 mg/ml refers to the product slightly soluble or insoluble)

Preparing Stock Solutions

	1mg	5mg	10mg
1 mM	3.9954 mL	19.9768 mL	39.9537 mL
5 mM	0.7991 mL	3.9954 mL	7.9907 mL
10 mM	0.3995 mL	1.9977 mL	3.9954 mL
50 mM	0.0799 mL	0.3995 mL	0.7991 mL

Please select the appropriate solvent to prepare the stock solution, according to the solubility of the product in different solvents. Please use it as soon as possible.

Note: The dilution table applies only to solid products. For liquid products, please calculate the stock solution based on the stated concentration and/or density.

Reference

- Kurohane K, et al. An Aliphatic Ester Diisopropyl Sebacate Exhibited an Adjuvant Effect on Fluorescein Isothiocyanate-Induced Contact Hypersensitivity Mouse Models. *Biol Pharm Bull.* 2018 Jan 1;41(1):147-150.
- Giannetti V, et al. Monitoring of contaminants in recycled paperboard for food contact applications. *J Sci Food Agric.* 2017 May;97(7):2191-2198.
- Kurohane K, et al. Adjuvant Effect of an Alternative Plasticizer, Diisopropyl Adipate, on a Contact Hypersensitivity Mouse Model: Link with Sensory Ion Channel TRPA1 Activation. *Biol Pharm Bull.* 2015;38(7):1054-62.
- Bradley EL, et al. Determination of phthalate diesters in foods. *Food Addit Contam Part A Chem Anal Control Expo Risk Assess.* 2013;30(4):722-34.

Inhibitor · Natural Compounds · Compound Libraries · Recombinant Proteins

This product is for Research Use Only· Not for Human or Veterinary or Therapeutic Use

Tel:781-999-4286 E_mail:info@targetmol.com Address:34 Washington Street,Wellesley Hills,MA 02481