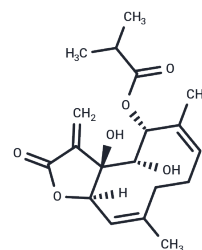


Leucantholide

Chemical Properties

CAS No. :	103425-50-9
Formula:	C ₁₉ H ₂₆ O ₆
Molecular Weight:	350.41
Storage:	Powder: -20°C for 3 years In solvent: -80°C for 1 year Actual storage temperature shall be subject to the COA.



Biological Description

Description	Leucantholide is a sesquiterpene lactone from <i>Montanoa leucantha</i> .
Targets(IC50)	Others

Preparing Stock Solutions

	1mg	5mg	10mg
1 mM	2.8538 mL	14.269 mL	28.538 mL
5 mM	0.5708 mL	2.8538 mL	5.7076 mL
10 mM	0.2854 mL	1.4269 mL	2.8538 mL
50 mM	0.0571 mL	0.2854 mL	0.5708 mL

Please select the appropriate solvent to prepare the stock solution, according to the solubility of the product in different solvents. Please use it as soon as possible.

Note: The dilution table applies only to solid products. For liquid products, please calculate the stock solution based on the stated concentration and/or density.

Reference

Oshima Y, Wong SM, Konno C, Cordell GA, Waller DP, Soejarto DD, Fong HH. Studies on zoapatle, II. Leucantholide, a novel sesquiterpene lactone from *Montanoa leucantha* ssp. *leucantha*. J Nat Prod. 1986 Mar-Apr;49(2):313-7. PubMed PMID: 3814249.

Inhibitor · Natural Compounds · Compound Libraries · Recombinant Proteins

This product is for Research Use Only · Not for Human or Veterinary or Therapeutic Use

Tel:781-999-4286 E_mail:info@targetmol.com Address:34 Washington Street,Wellesley Hills,MA 02481