

## Oxeladin citrate

## Chemical Properties

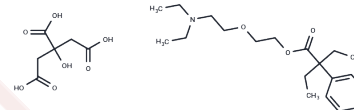
CAS No. : 52432-72-1

Formula: C<sub>26</sub>H<sub>41</sub>NO<sub>10</sub>

Molecular Weight: 527.6

Storage: Powder: -20°C for 3 years | In solvent: -80°C for 1 year

Actual storage temperature shall be subject to the COA.



## Biological Description

Description	Oxeladin citrate is a highly potent and effective cough suppressant, which can treat all types of cough of various etiologies. It is not related to opium or its derivatives, so treatment with oxeladin is no risk of addiction. And it has none of the side effects (such as hypnosis, respiratory depression, tolerance, constipation and analgesia) which are present when common antitussives. It can be used at every age, as well as in patients with heart disease, since it is of a high level of safety and has a great selectivity to act on the bulbar centre of cough.
Targets(IC50)	Others, Sigma receptor

## Solubility Information

Solubility	H <sub>2</sub> O: 94.77 mM, Sonication is recommended. DMSO: 60 mg/mL (113.72 mM), Sonication is recommended. ( $< 1$ mg/ml refers to the product slightly soluble or insoluble)
In vivo Formulation	10% DMSO+40% PEG300+5% Tween 80+45% Saline: 2 mg/mL (3.79 mM), Sonication is recommended. <i>Please add the solvents sequentially, clarifying the solution as much as possible before adding the next one. Dissolve by heating and/or sonication if necessary. Working solution is recommended to be prepared and used immediately. The formulation provided above is for reference purposes only. In vivo formulations may vary and should be modified based on specific experimental conditions.</i>

### Preparing Stock Solutions

---

	1mg	5mg	10mg
1 mM	1.8954 mL	9.4769 mL	18.9538 mL
5 mM	0.3791 mL	1.8954 mL	3.7908 mL
10 mM	0.1895 mL	0.9477 mL	1.8954 mL
50 mM	0.0379 mL	0.1895 mL	0.3791 mL

---

Please select the appropriate solvent to prepare the stock solution, according to the solubility of the product in different solvents. Please use it as soon as possible.

Note: The dilution table applies only to solid products. For liquid products, please calculate the stock solution based on the stated concentration and/or density.

#### Reference

Knopp C, Korsatko W. Pharmazie. 1982 Jan;37(1):76-7.

**Inhibitor · Natural Compounds · Compound Libraries · Recombinant Proteins**

This product is for Research Use Only · Not for Human or Veterinary or Therapeutic Use

Tel:781-999-4286 E\_mail:info@targetmol.com Address:34 Washington Street,Wellesley Hills,MA 02481