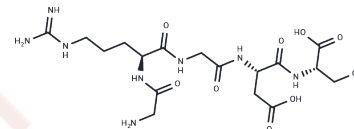


Gly-Arg-Gly-Asp-Ser

Chemical Properties

CAS No. :	96426-21-0
Formula:	C17H30N8O9
Molecular Weight:	490.47
Storage:	Keep away from moisture Powder: -20°C for 3 years In solvent: -80°C for 1 year <small>Actual storage temperature shall be subject to the COA.</small>



Biological Description

Description	Gly-Arg-Gly-Asp-Ser (GRGDS) GRGDS is a cell binding protein domain derived from the cell-binding region of fibronectin.
Targets(IC50)	Integrin

Solubility Information

Solubility	H2O: 33.33 mg/mL (67.96 mM),Sonication is recommended. DMSO: 100 mg/mL (203.89 mM),Sonication is recommended. (< 1 mg/ml refers to the product slightly soluble or insoluble)
In vivo Formulation	10% DMSO+40% PEG300+5% Tween-80+45% Saline: 3.3 mg/mL (6.73 mM),Sonication is recommended. <i>Please add the solvents sequentially, clarifying the solution as much as possible before adding the next one. Dissolve by heating and/or sonication if necessary. Working solution is recommended to be prepared and used immediately. The formulation provided above is for reference purposes only. In vivo formulations may vary and should be modified based on specific experimental conditions.</i>

Preparing Stock Solutions

	1mg	5mg	10mg
1 mM	2.0389 mL	10.1943 mL	20.3886 mL
5 mM	0.4078 mL	2.0389 mL	4.0777 mL
10 mM	0.2039 mL	1.0194 mL	2.0389 mL
50 mM	0.0408 mL	0.2039 mL	0.4078 mL

Please select the appropriate solvent to prepare the stock solution, according to the solubility of the product in different solvents. Please use it as soon as possible.

Note: The dilution table applies only to solid products. For liquid products, please calculate the stock solution based on the stated concentration and/or density.

Reference

Bernhagen D, et al. High-Affinity RGD-Knottin Peptide as a New Tool for Rapid Evaluation of the Binding Strength of Unlabeled RGD-Peptides to $\alpha\beta3$, $\alpha\beta5$, and $\alpha5\beta1$ Integrin Receptors. Anal Chem. 2017 Jun 6;89(11):5991-5997.

Inhibitor · Natural Compounds · Compound Libraries · Recombinant Proteins

This product is for Research Use Only· Not for Human or Veterinary or Therapeutic Use

Tel:781-999-4286 E_mail:info@targetmol.com Address:34 Washington Street,Wellesley Hills,MA 02481