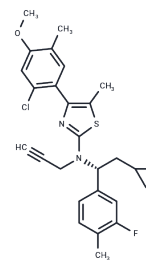


(R)-Crinecerfont

Chemical Properties

CAS No. :	2649012-21-3
Formula:	C ₂₇ H ₂₈ ClFN ₂ O ₂ S
Molecular Weight:	483.04
Storage:	Powder: -20°C for 3 years In solvent: -80°C for 1 year Actual storage temperature shall be subject to the COA.



Biological Description

Description	(R)-Crinecerfont is an enantiomeric counterpart of SSR-125543. SSR-125543 is a potent CRF-R1 antagonist with $K_i = 1.0$ nM for human CRF-R1.
Targets(IC50)	CFTR, CRFR

Solubility Information

Solubility	DMSO: 45 mg/mL (93.16 mM), Sonication is recommended. (< 1 mg/ml refers to the product slightly soluble or insoluble)
------------	---

Preparing Stock Solutions

	1mg	5mg	10mg
1 mM	2.0702 mL	10.3511 mL	20.7022 mL
5 mM	0.414 mL	2.0702 mL	4.1404 mL
10 mM	0.207 mL	1.0351 mL	2.0702 mL
50 mM	0.0414 mL	0.207 mL	0.414 mL

Please select the appropriate solvent to prepare the stock solution, according to the solubility of the product in different solvents. Please use it as soon as possible.

Note: The dilution table applies only to solid products. For liquid products, please calculate the stock solution based on the stated concentration and/or density.

Reference

Dzierba CD, Hartz RA, Bronson JJ. Recent advances in corticotropin-releasing factor receptor antagonists. Annu Rep Med Chem. 2008;43:3-23.

Inhibitor · Natural Compounds · Compound Libraries · Recombinant Proteins

This product is for Research Use Only · Not for Human or Veterinary or Therapeutic Use

Tel:781-999-4286 E_mail:info@targetmol.com Address:34 Washington Street,Wellesley Hills,MA 02481