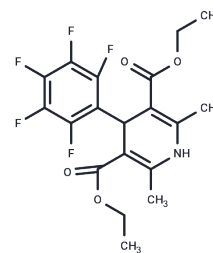


Nemadipine-A

Chemical Properties

| | |
|-------------------|---|
| CAS No. : | 54280-71-6 |
| Formula: | C ₁₉ H ₁₈ F ₅ N ₂ O ₄ |
| Molecular Weight: | 419.34 |
| Storage: | Powder: -20°C for 3 years In solvent: -80°C for 1 year Actual storage temperature shall be subject to the COA. |



Biological Description

| | |
|---------------|--|
| Description | Nemadipine A is an L-type calcium channel blocker that induces morphological and growth defects in wild-type <i>C. elegans</i> and those with hypoexpression of <i>egl-19</i> , which encodes the only L-type calcium channel α 1-subunit in the <i>C. elegans</i> genome. It also inhibits L-type calcium channels in chick ciliary neurons. Nemadipine A increases TRAIL-induced cytotoxicity and synergistically enhances caspase-8 and caspase-3 activation in a concentration-dependent manner in H1299 lung adenocarcinoma cells. It also decreases Survivin expression when used alone or in combination with TRAIL in A549 cells. |
| Targets(IC50) | Others, Calcium Channel |

Solubility Information

| | |
|------------|--|
| Solubility | DMSO: 20 mg/mL (47.69 mM), Sonication is recommended. Ethanol: 15 mg/mL (35.77 mM), Sonication is recommended. Methanol: 100 mg/mL (238.47 mM), Sonication is recommended. (< 1 mg/ml refers to the product slightly soluble or insoluble) |
|------------|--|

Preparing Stock Solutions

| | 1mg | 5mg | 10mg |
|-------|-----------|------------|-----------|
| 1 mM | 2.3847 mL | 11.9235 mL | 23.847 mL |
| 5 mM | 0.4769 mL | 2.3847 mL | 4.7694 mL |
| 10 mM | 0.2385 mL | 1.1923 mL | 2.3847 mL |
| 50 mM | 0.0477 mL | 0.2385 mL | 0.4769 mL |

Please select the appropriate solvent to prepare the stock solution, according to the solubility of the product in different solvents. Please use it as soon as possible.

Note: The dilution table applies only to solid products. For liquid products, please calculate the stock solution based on the stated concentration and/or density.

Inhibitor · Natural Compounds · Compound Libraries · Recombinant Proteins

This product is for Research Use Only · Not for Human or Veterinary or Therapeutic Use

Tel:781-999-4286 E_mail:info@targetmol.com Address:34 Washington Street,Wellesley Hills,MA 02481