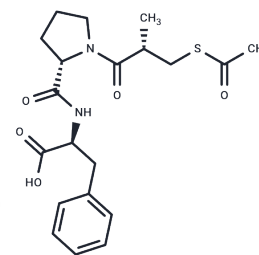


## Alacepril

## Chemical Properties

CAS No. :	74258-86-9
Formula:	C <sub>20</sub> H <sub>26</sub> N <sub>2</sub> O <sub>5</sub> S
Molecular Weight:	406.5
Storage:	Powder: -20°C for 3 years   In solvent: -80°C for 1 year Actual storage temperature shall be subject to the COA.



## Biological Description

Description	Alacepril (DU-1219) is a relatively novel angiotensin-converting enzyme inhibitor, used as an antihypertensive
Targets(IC50)	RAAS,Angiotensin-converting Enzyme (ACE)
In vivo	Treatment with alacepril improves functional status and exercise capacity in patients with mild-to-moderate CHF. Neurohormones were favourably influenced by alacepril therapy, with significant decreases in plasma aldosterone, ANP and BNP levels[1].

## Solubility Information

Solubility	DMSO: 27.5 mg/mL (67.65 mM),Sonication is recommended. (< 1 mg/ml refers to the product slightly soluble or insoluble)
In vivo Formulation	10% DMSO+40% PEG300+5% Tween 80+45% Saline: 2 mg/mL (4.92 mM),Sonication is recommended. <i>Please add the solvents sequentially, clarifying the solution as much as possible before adding the next one. Dissolve by heating and/or sonication if necessary. Working solution is recommended to be prepared and used immediately. The formulation provided above is for reference purposes only. In vivo formulations may vary and should be modified based on specific experimental conditions.</i>

### Preparing Stock Solutions

---

	1mg	5mg	10mg
1 mM	2.460 mL	12.3001 mL	24.6002 mL
5 mM	0.492 mL	2.460 mL	4.920 mL
10 mM	0.246 mL	1.230 mL	2.460 mL
50 mM	0.0492 mL	0.246 mL	0.492 mL

---

Please select the appropriate solvent to prepare the stock solution, according to the solubility of the product in different solvents. Please use it as soon as possible.

Note: The dilution table applies only to solid products. For liquid products, please calculate the stock solution based on the stated concentration and/or density.

### Reference

Kinugawa T , Osaki S , Kato M , et al. Effects of the angiotensin-converting enzyme inhibitor alacepril on exercise capacity and neurohormonal factors in patients with mild-to-moderate heart failure[J]. Clin Exp Pharmacol Physiol, 2002, 29(12):1060-1065.

Yasutomo H , Kensuke N , Nobuyuki K , et al. Effects of the angiotensin-converting enzyme inhibitor alacepril in dogs with mitral valve disease[J]. Journal of Veterinary Medical Science, 2018.

**Inhibitor · Natural Compounds · Compound Libraries · Recombinant Proteins**

This product is for Research Use Only · Not for Human or Veterinary or Therapeutic Use

Tel:781-999-4286 E\_mail:info@targetmol.com Address:34 Washington Street,Wellesley Hills,MA 02481