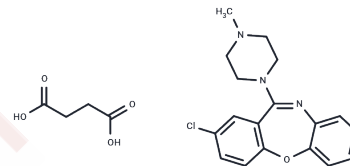


Loxapine succinate

Chemical Properties

CAS No. :	27833-64-3
Formula:	C ₂₂ H ₂₄ ClN ₃ O ₅
Molecular Weight:	445.9
Storage:	Powder: -20°C for 3 years In solvent: -80°C for 1 year Actual storage temperature shall be subject to the COA.



Biological Description

Description	Loxapine succinate (Loxapac), a D2DR and D4DR inhibitor, is utilized in schizophrenia.
Targets(IC50)	5-HT Receptor,Dopamine Receptor
In vitro	In rats, subcutaneous injection of Loxapine (0.3 mg/kg) induces general stiffness. In the rat brain, administering Loxapine (5 mg/kg) does not alter dopamine receptor density, but it reduces serotonin receptor density.
In vivo	Loxapine effectively facilitates the binding of [3H]ketanserin to 5-HT ₂ receptors in both the human frontal cortex (ki=6.2 nM) and the bovine frontal cortex (ki=6.6 nM). Additionally, in LPS-activated mixed glial cells, loxapine at concentrations of 0.2 μM, 2 μM, and 20 μM, successfully reduces the secretion of IL-1β and IL-2.

Solubility Information

Solubility	Ethanol: 2 mg/mL (4.49 mM),Sonication is recommended. DMSO: 82 mg/mL (183.9 mM),Sonication is recommended. (< 1 mg/ml refers to the product slightly soluble or insoluble)
In vivo Formulation	10% DMSO+40% PEG300+5% Tween 80+45% Saline: 3.3 mg/mL (7.4 mM),Sonication is recommended. <i>Please add the solvents sequentially, clarifying the solution as much as possible before adding the next one. Dissolve by heating and/or sonication if necessary. Working solution is recommended to be prepared and used immediately. The formulation provided above is for reference purposes only. In vivo formulations may vary and should be modified based on specific experimental conditions.</i>

Preparing Stock Solutions

	1mg	5mg	10mg
1 mM	2.2427 mL	11.2133 mL	22.4266 mL
5 mM	0.4485 mL	2.2427 mL	4.4853 mL
10 mM	0.2243 mL	1.1213 mL	2.2427 mL
50 mM	0.0449 mL	0.2243 mL	0.4485 mL

Please select the appropriate solvent to prepare the stock solution, according to the solubility of the product in different solvents. Please use it as soon as possible.

Note: The dilution table applies only to solid products. For liquid products, please calculate the stock solution based on the stated concentration and/or density.

Reference

Singh AN, et al. J Psychiatry Neurosci, 1996, 21(1), 29-35.

Labuzek K, et al. Eur Neuropsychopharmacol, 2005, 15(1), 23-30.

Lee T, et al. Psychiatry Res, 1984, 12(4), 277-285.

Kalkman HO, et al. Naunyn Schmiedebergs Arch Pharmacol, 1997, 355(3), 361-364.

Inhibitor · Natural Compounds · Compound Libraries · Recombinant Proteins

This product is for Research Use Only · Not for Human or Veterinary or Therapeutic Use

Tel:781-999-4286 E_mail:info@targetmol.com Address:34 Washington Street,Wellesley Hills,MA 02481