

Ex26

Chemical Properties

CAS No. : 1233332-37-0

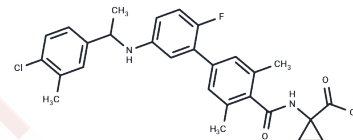
Formula: C₂₈H₂₈ClFN₂O₃

Molecular Weight: 494.99

Store at low temperature

Storage: Powder: -20°C for 3 years | In solvent: -80°C for 1 year

Actual storage temperature shall be subject to the COA.



Biological Description

Description	Ex26 (S1P1-IN-Ex26) is a selective and potent sphingosine 1-phosphate receptor 1 (S1P1) antagonist that disrupts SR-B1-S1PR1 interactions and inhibits S1P-S1PR1 signaling. Ex26 is used in experimental autoimmune encephalomyelitis, atherosclerosis, and gastric cancer.
Targets(IC50)	LPL Receptor,S1P Receptor
In vitro	In U2OS cells and Chinese hamster ovary cells, Ex26 (0-10 μM; 1 hour) was confirmed as a potent and selective antagonist of S1P1 (IC ₅₀ =0.93 nM)[1].
In vivo	In eight-week-old male C57Bl/6J mice, S1P1-IN-Ex26 (3 mg/kg; intraperitoneal injection; once daily; 3 days) induced lymphocyte sequestration at low doses, with an ED ₅₀ of 0.06 mg/kg after 2 hours of treatment. This led to significant retention of T and B cells within the lymph nodes and significant decreases in T and B cells within the spleen[1].

Preparing Stock Solutions

	1mg	5mg	10mg
1 mM	2.0202 mL	10.1012 mL	20.2024 mL
5 mM	0.404 mL	2.0202 mL	4.0405 mL
10 mM	0.202 mL	1.0101 mL	2.0202 mL
50 mM	0.0404 mL	0.202 mL	0.404 mL

Please select the appropriate solvent to prepare the stock solution, according to the solubility of the product in different solvents. Please use it as soon as possible.

Note: The dilution table applies only to solid products. For liquid products, please calculate the stock solution based on the stated concentration and/or density.

Reference

Stuart M Cahalan, et al. Sphingosine 1-phosphate receptor 1 (S1P(1)) upregulation and amelioration of experimental autoimmune encephalomyelitis by an S1P(1) antagonist. Mol Pharmacol. 2013 Feb;83(2):316-21.

Inhibitor · Natural Compounds · Compound Libraries · Recombinant Proteins

This product is for Research Use Only · Not for Human or Veterinary or Therapeutic Use

Tel:781-999-4286 E_mail:info@targetmol.com Address:34 Washington Street,Wellesley Hills,MA 02481