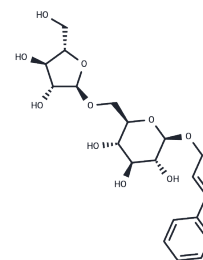


Rosarin

Chemical Properties

CAS No. :	84954-93-8
Formula:	C ₂₀ H ₂₈ O ₁₀
Molecular Weight:	428.43
Storage:	Keep away from moisture Powder: -20°C for 3 years In solvent: -80°C for 1 year <i>Actual storage temperature shall be subject to the COA.</i>



Biological Description

Description	Rosarin has anti-inflammatory and neuroprotective effects. Rosarin suppresses the expression of the proinflammatory factors iNOS, IL-1 β , and TNF- α in the kidney and prefrontal cortex of brain in mice .
Targets(IC50)	Others, Interleukin

Solubility Information

Solubility	DMSO: 145 mg/mL (338.45 mM), Sonication is recommended. (< 1 mg/ml refers to the product slightly soluble or insoluble)
In vivo Formulation	10% DMSO+40% PEG300+5% Tween 80+45% Saline: 2 mg/mL (4.67 mM), Sonication is recommended. <i>Please add the solvents sequentially, clarifying the solution as much as possible before adding the next one. Dissolve by heating and/or sonication if necessary. Working solution is recommended to be prepared and used immediately. The formulation provided above is for reference purposes only. In vivo formulations may vary and should be modified based on specific experimental conditions.</i>

Preparing Stock Solutions

	1mg	5mg	10mg
1 mM	2.3341 mL	11.6705 mL	23.341 mL
5 mM	0.4668 mL	2.3341 mL	4.6682 mL
10 mM	0.2334 mL	1.1671 mL	2.3341 mL
50 mM	0.0467 mL	0.2334 mL	0.4668 mL

Please select the appropriate solvent to prepare the stock solution, according to the solubility of the product in different solvents. Please use it as soon as possible.

Note: The dilution table applies only to solid products. For liquid products, please calculate the stock solution based on the stated concentration and/or density.

Reference

Huang B, Lin B, Zheng H, et al. Discovery of natural products as influenza neuraminidase inhibitors: in silico screening, in vitro validation, and molecular dynamic simulation studies. *Molecular Diversity*. 2025: 1-17.

Inhibitor · Natural Compounds · Compound Libraries · Recombinant Proteins

This product is for Research Use Only · Not for Human or Veterinary or Therapeutic Use

Tel: 781-999-4286 E_mail: info@targetmol.com Address: 34 Washington Street, Wellesley Hills, MA 02481