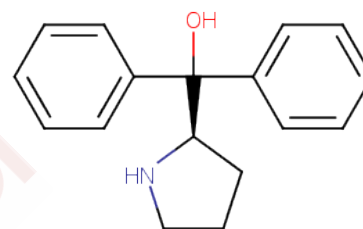


(R)-D2PM

Chemical Properties

CAS No. : 22348-32-9
 Formula: C₁₇H₁₉NO
 Molecular Weight: 253.345
 Storage: Powder: -20°C for 3 years | In solvent: -80°C for 1 year
Actual storage temperature shall be subject to the COA.



Biological Description

Description (R)-D2PM, with CAS No. 22348-32-9, is a fragment molecule that serves as an important scaffold for molecular linking, expansion, and modification. (R)-D2PM provides a structural basis and research tool for the design and screening of novel drug candidates, and is commonly used in drug discovery, drug synthesis, and related research.

Preparing Stock Solutions

	1mg	5mg	10mg
1 mM	3.9471 mL	19.7355 mL	39.4711 mL
5 mM	0.7894 mL	3.9471 mL	7.8942 mL
10 mM	0.3947 mL	1.9736 mL	3.9471 mL
50 mM	0.0789 mL	0.3947 mL	0.7894 mL

Please select the appropriate solvent to prepare the stock solution, according to the solubility of the product in different solvents. Please use it as soon as possible.

Note: The dilution table applies only to solid products. For liquid products, please calculate the stock solution based on the stated concentration and/or density.

Inhibitor · Natural Compounds · Compound Libraries · Recombinant Proteins

This product is for Research Use Only · Not for Human or Veterinary or Therapeutic Use

Tel: 781-999-4286 E_mail: info@targetmol.com Address: 34 Washington Street, Wellesley Hills, MA 02481