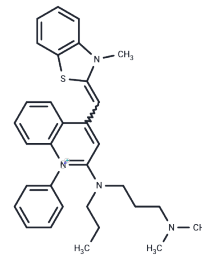


SYBR GREEN 1

Chemical Properties

CAS No. :	163795-75-3
Formula:	C ₃₂ H ₃₇ N ₄ S
Molecular Weight:	509.73
Storage:	Keep away from direct sunlight, Store at low temperature Powder: -20°C for 3 years In solvent: -80°C for 1 year <small>Actual storage temperature shall be subject to the COA.</small>



Biological Description

Description	SYBR Green I (Green-DNA Dye, SYBR Green I) is a dye that binds to all dsDNA double helix minor groove regions, with a maximum absorption wavelength around 497nm and a maximum emission wavelength around 520nm.
Targets(IC50)	Others
In vitro	Precasting SYBR Green I Gels: Precast non-denaturing polyacrylamide or agarose gels with SYBR Green I staining solution, which is diluted from the SYBR Green I stock reagent 1:10,000 prior to pouring the gel. The DNA detection limit for gels precast with SYBR Green I stain may be slightly higher (on the order of 30 to 40 pg/band) than for gels stained after electrophoresis (less than 20 pg/band), and the migration rate of DNA fragments in SYBR Green I gels may be significantly slower than the migration rate of the same fragments in a gel containing no dye.

Preparing Stock Solutions

	1mg	5mg	10mg
1 mM	1.9618 mL	9.8091 mL	19.6182 mL
5 mM	0.3924 mL	1.9618 mL	3.9236 mL
10 mM	0.1962 mL	0.9809 mL	1.9618 mL
50 mM	0.0392 mL	0.1962 mL	0.3924 mL

Please select the appropriate solvent to prepare the stock solution, according to the solubility of the product in different solvents. Please use it as soon as possible.

Note: The dilution table applies only to solid products. For liquid products, please calculate the stock solution based on the stated concentration and/or density.

Reference

Arya M, et al. Basic principles of real-time quantitative PCR. Expert Rev Mol Diagn. 2005 Mar;5(2):209-19.

Li Y, et al. Establishment of Duplex SYBR Green I-based Real-time PCR Assay for Simultaneous Detection of Duck Hepatitis A Virus-1 and Duck Astrovirus-3. Avian Dis. 2021 Jun;65(2):281-286.

Inhibitor · Natural Compounds · Compound Libraries · Recombinant Proteins

This product is for Research Use Only · Not for Human or Veterinary or Therapeutic Use

Tel:781-999-4286 E_mail:info@targetmol.com Address:34 Washington Street,Wellesley Hills,MA 02481