

## Leukotriene B5

## Chemical Properties

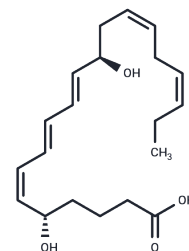
CAS No. : 80445-66-5

Formula: C<sub>20</sub>H<sub>30</sub>O<sub>4</sub>

Molecular Weight: 334.456

Storage: Powder: -20°C for 3 years | In solvent: -80°C for 1 year

Actual storage temperature shall be subject to the COA.



## Biological Description

Description	Leukotriene B5 (LTB5) is a metabolite of eicosapentaenoic acid formed via the 5-lipoxygenase (5-LO) pathway, possessing diverse biological activities, including the ability to increase contraction of bullfrog lung strips ex vivo in a concentration-dependent manner.
Targets(IC50)	Others,Leukotriene Receptor
In vivo	In vivo, LTB5 (100 nM) reduces tumor volume in mice injected with Tm1 murine melanoma cells. LTB5 also elicits chemokinesis and lysosomal enzyme release from polymorphonuclear leukocytes (PMNLs) 20- to 30-fold less, and induces platelet aggregation 8-fold less, potently than LTB4 .

## Solubility Information

Solubility	DMSO: >50 mg/mL (per Rao Maddipati),Sonication is recommended. Ethanol: >50 mg/mL (per Rao Maddipati),Sonication is recommended. PBS (pH 7.2): >1 mg/mL (from 13(S)-HODE),Sonication is recommended. DMF: >50 mg/mL (per Rao Maddipati),Sonication is recommended. (< 1 mg/ml refers to the product slightly soluble or insoluble)
------------	--

### Preparing Stock Solutions

---

	<b>1mg</b>	<b>5mg</b>	<b>10mg</b>
1 mM	2.9899 mL	14.9495 mL	29.8989 mL
5 mM	0.598 mL	2.9899 mL	5.9798 mL
10 mM	0.299 mL	1.4949 mL	2.9899 mL
50 mM	0.0598 mL	0.299 mL	0.598 mL

---

Please select the appropriate solvent to prepare the stock solution, according to the solubility of the product in different solvents. Please use it as soon as possible.

Note: The dilution table applies only to solid products. For liquid products, please calculate the stock solution based on the stated concentration and/or density.

**Inhibitor · Natural Compounds · Compound Libraries · Recombinant Proteins**

This product is for Research Use Only · Not for Human or Veterinary or Therapeutic Use

Tel:781-999-4286 E\_mail:info@targetmol.com Address:34 Washington Street,Wellesley Hills,MA 02481