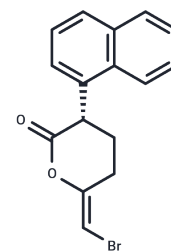


## (S)-Bromo-enol lactone

## Chemical Properties

CAS No. :	478288-94-7
Formula:	C <sub>16</sub> H <sub>13</sub> BrO <sub>2</sub>
Molecular Weight:	317.18
Storage:	Powder: -20°C for 3 years   In solvent: -80°C for 1 year Actual storage temperature shall be subject to the COA.



## Biological Description

Description	(S)-Bromo-enol lactone is a chiral, mechanism-based irreversible inhibitor targeting calcium-independent phospholipase A <sub>2</sub> (iPLA <sub>2</sub> ). Compared with its enantiomer (R)-BEL, (S)-Bromo-enol lactone has higher selectivity for iPLA <sub>2</sub> γ(Group VIB), and it is often used in combination with (R)-BEL to distinguish the functions of different subtypes of iPLA <sub>2</sub> in arachidonic acid release and cell signal transduction.
-------------	--

## Preparing Stock Solutions

	1mg	5mg	10mg
1 mM	3.1528 mL	15.7639 mL	31.5278 mL
5 mM	0.6306 mL	3.1528 mL	6.3056 mL
10 mM	0.3153 mL	1.5764 mL	3.1528 mL
50 mM	0.0631 mL	0.3153 mL	0.6306 mL

Please select the appropriate solvent to prepare the stock solution, according to the solubility of the product in different solvents. Please use it as soon as possible.

Note: The dilution table applies only to solid products. For liquid products, please calculate the stock solution based on the stated concentration and/or density.

## Reference

Cedars A, Jenkins C M, Mancuso D J, et al. Calcium-independent phospholipases in the heart: mediators of cellular signaling, bioenergetics, and ischemia-induced electrophysiologic dysfunction[J]. Journal of cardiovascular pharmacology, 2009,

Inhibitor · Natural Compounds · Compound Libraries · Recombinant Proteins

This product is for Research Use Only · Not for Human or Veterinary or Therapeutic Use

Tel:781-999-4286 E\_mail:info@targetmol.com Address:34 Washington Street,Wellesley Hills,MA 02481