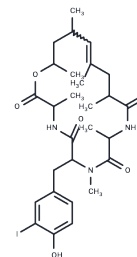


## Geodiamolide A

### Chemical Properties

CAS No. :	108675-63-4
Formula:	C <sub>28</sub> H <sub>40</sub> N <sub>3</sub> O <sub>6</sub>
Molecular Weight:	641.54
Storage:	Powder: -20°C for 3 years   In solvent: -80°C for 1 year Actual storage temperature shall be subject to the COA.



### Biological Description

Description	Geodiamolide A is a cyclodepsipeptide.
Targets(IC50)	Others

### Preparing Stock Solutions

	1mg	5mg	10mg
1 mM	1.5587 mL	7.7937 mL	15.5875 mL
5 mM	0.3117 mL	1.5587 mL	3.1175 mL
10 mM	0.1559 mL	0.7794 mL	1.5587 mL
50 mM	0.0312 mL	0.1559 mL	0.3117 mL

Please select the appropriate solvent to prepare the stock solution, according to the solubility of the product in different solvents. Please use it as soon as possible.

Note: The dilution table applies only to solid products. For liquid products, please calculate the stock solution based on the stated concentration and/or density.

### Reference

- Rangel M, Ionta M, Cristina Pfister S, Adolpho Sant'anna Ferreira R, Maria Machado-Santelli G. Marine sponge depsipeptide increases gap junction length in HTC cells transfected with Cx43-GFP. *Cell Biol Int Rep* (2010). 2010;17(1):e00003. doi: 10.1042/CBR20100003. Epub 2010 Aug 11. PubMed PMID: 23119141; PubMed Central PMCID: PMC3476824.
- Rangel M, Prado MP, Konno K, Naoki H, Freitas JC, Machado-Santelli GM. Cytoskeleton alterations induced by *Geodia corticostylifera* depsipeptides in breast cancer cells. *Peptides*. 2006 Sep;27(9):2047-57. Epub 2006 Jul 14. PubMed PMID: 16843570.
- Stingl J, Andersen RJ, Emerman JT. In vitro screening of crude extracts and pure metabolites obtained from marine invertebrates for the treatment of breast cancer. *Cancer Chemother Pharmacol*. 1992;30(5):401-6. PubMed PMID: 1505079.

**Inhibitor · Natural Compounds · Compound Libraries · Recombinant Proteins**

This product is for Research Use Only · Not for Human or Veterinary or Therapeutic Use

Tel:781-999-4286 E\_mail:info@targetmol.com Address:34 Washington Street,Wellesley Hills,MA 02481