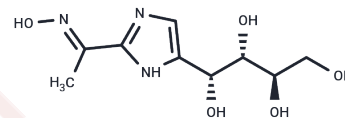


LX-2931

## Chemical Properties

CAS No. : 948840-25-3  
 Formula: C<sub>9</sub>H<sub>15</sub>N<sub>3</sub>O<sub>5</sub>  
 Molecular Weight: 245.23  
 Storage: Powder: -20°C for 3 years | In solvent: -80°C for 1 year  
 Actual storage temperature shall be subject to the COA.



## Biological Description

Description	LX-2931(LX-3305) is a sphingosine-1-phosphate cleavage enzyme (S1P) inhibitor for the treatment of rheumatoid arthritis.
Targets(IC50)	LPL Receptor,S1P Receptor

## Solubility Information

Solubility DMSO: 100 mg/mL (407.78 mM),Sonication is recommended.  
 (< 1 mg/ml refers to the product slightly soluble or insoluble)

## Preparing Stock Solutions

	1mg	5mg	10mg
1 mM	4.0778 mL	20.389 mL	40.778 mL
5 mM	0.8156 mL	4.0778 mL	8.1556 mL
10 mM	0.4078 mL	2.0389 mL	4.0778 mL
50 mM	0.0816 mL	0.4078 mL	0.8156 mL

Please select the appropriate solvent to prepare the stock solution, according to the solubility of the product in different solvents. Please use it as soon as possible.

Note: The dilution table applies only to solid products. For liquid products, please calculate the stock solution based on the stated concentration and/or density.

## Reference

- Harris CM, et al. Sphingosine-1-Phosphate (S1P) Lyase Inhibition Causes Increased Cardiac S1P Levels and Bradycardia in Rats. J Pharmacol Exp Ther. 2016 Oct;359(1):151-8.  
 Fleischmann R. Novel small-molecular therapeutics for rheumatoid arthritis. Curr Opin Rheumatol. 2012 May;24(3):335-41.

**Inhibitor · Natural Compounds · Compound Libraries · Recombinant Proteins**

This product is for Research Use Only · Not for Human or Veterinary or Therapeutic Use

Tel:781-999-4286 E\_mail:info@targetmol.com Address:34 Washington Street,Wellesley Hills,MA 02481