

L 687384

Chemical Properties

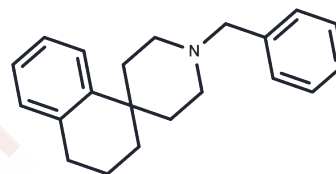
CAS No. : 95417-67-7

Formula: C₂₁H₂₅N

Molecular Weight: 291.43

Storage: Powder: -20°C for 3 years | In solvent: -80°C for 1 year

Actual storage temperature shall be subject to the COA.



Biological Description

Description	L 687384 is a high-affinity ligand of sigma receptor.
Targets(IC50)	Others

Preparing Stock Solutions

	1mg	5mg	10mg
1 mM	3.4314 mL	17.1568 mL	34.3136 mL
5 mM	0.6863 mL	3.4314 mL	6.8627 mL
10 mM	0.3431 mL	1.7157 mL	3.4314 mL
50 mM	0.0686 mL	0.3431 mL	0.6863 mL

Please select the appropriate solvent to prepare the stock solution, according to the solubility of the product in different solvents. Please use it as soon as possible.

Note: The dilution table applies only to solid products. For liquid products, please calculate the stock solution based on the stated concentration and/or density.

Reference

Couture S, Debonnel G. Some of the effects of the selective sigma ligand (+)pentazocine are mediated via a naloxone-sensitive receptor. *Synapse*. 2001 Mar 15;39(4):323-31. PubMed PMID: 11169783.

Bergeron R, Debonnel G. Effects of low and high doses of selective sigma ligands: further evidence suggesting the existence of different subtypes of sigma receptors. *Psychopharmacology (Berl)*. 1997 Feb;129(3):215-24. PubMed PMID: 9084059.

McLarnon J, Sawyer D, Church J. The actions of L-687,384, a sigma receptor ligand, on NMDA-induced currents in cultured rat hippocampal pyramidal neurons. *Neurosci Lett*. 1994 Jun 20;174(2):181-4. PubMed PMID: 7526288.

Inhibitor · Natural Compounds · Compound Libraries · Recombinant Proteins

This product is for Research Use Only · Not for Human or Veterinary or Therapeutic Use

Tel:781-999-4286 E_mail:info@targetmol.com Address:34 Washington Street,Wellesley Hills,MA 02481